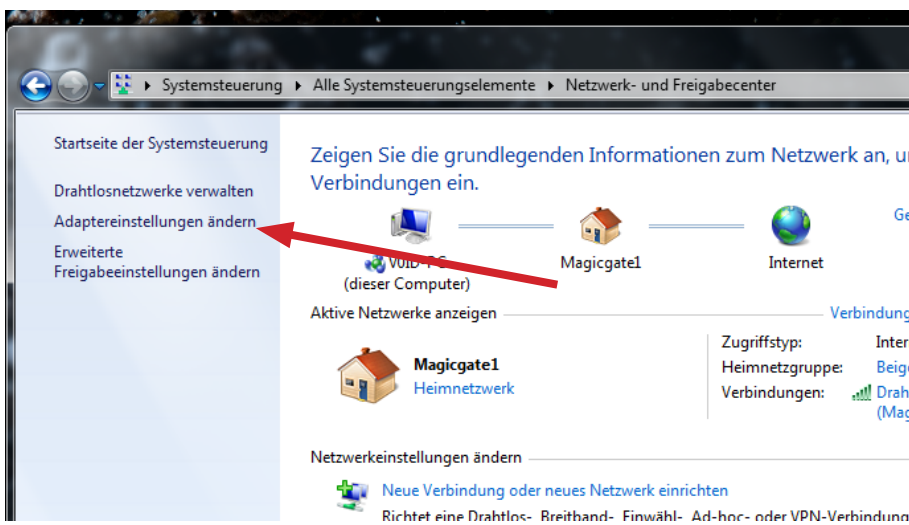


Network Setup for MDC-Windows

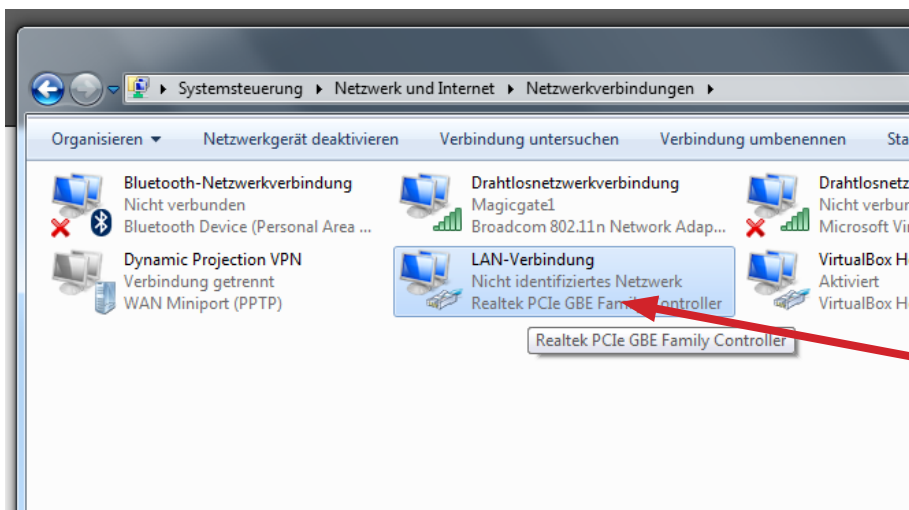
IMPORTANT NOTE: Before you start to configure the network-device of your Windows PC please connect the Mirror Head to the network device of the PC and power on the Mirror Head.

1. Open your "Control-Panel"/"Systemsteuerung" and navigate to the Network-Center. Click on "Adaptoreinstellungen ändern"/"Network devices"



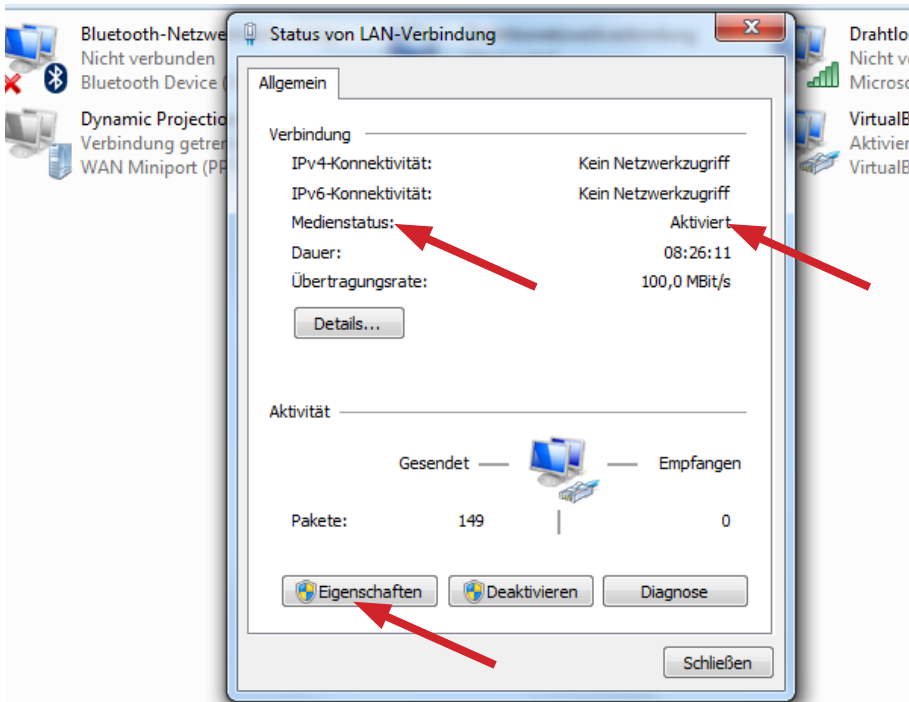
2. Find your LAN-Connection/LAN-Verbindung of your PC which is connected to the Mirror Head. Make sure there is NO red-cross visible on this connection. Double-Click on the network device.

(If you see a red-cross the physical connection to the Mirror Head device is not correct. Make sure your PC has a AUTO-MDI-X network interface (common since 1000Base-T). If you are not sure if you do have MDI-X use a Cross-Over networkcable or use a switched network.)

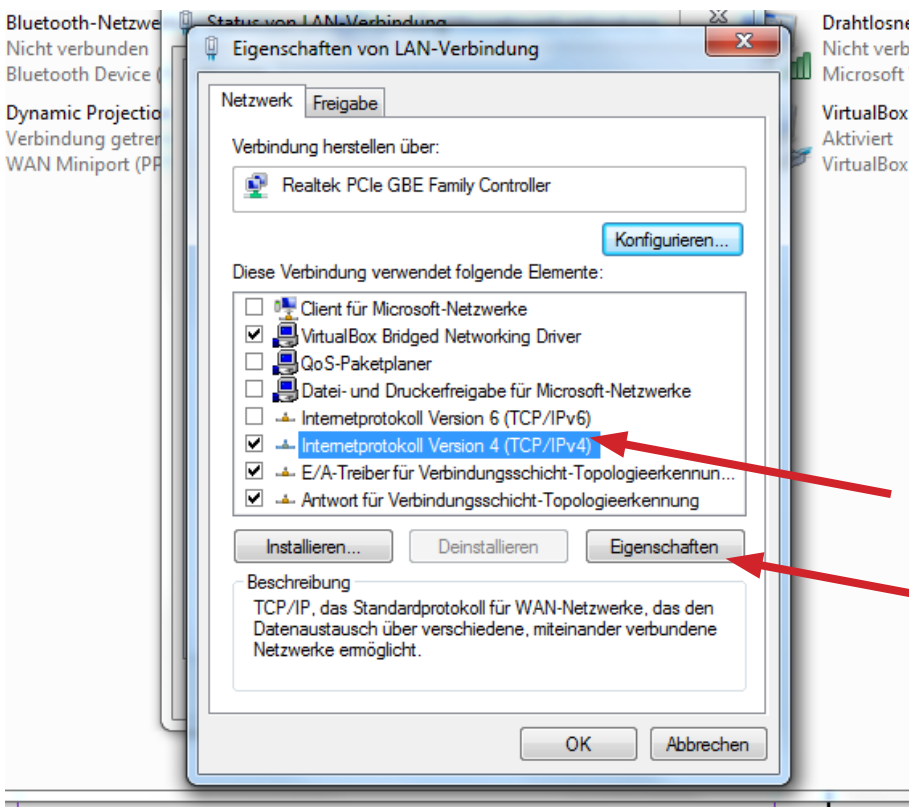




3. Make sure the "Mediastatus"/"Medienstatus" is active. Click on "Eigenschaften"/"Properties".

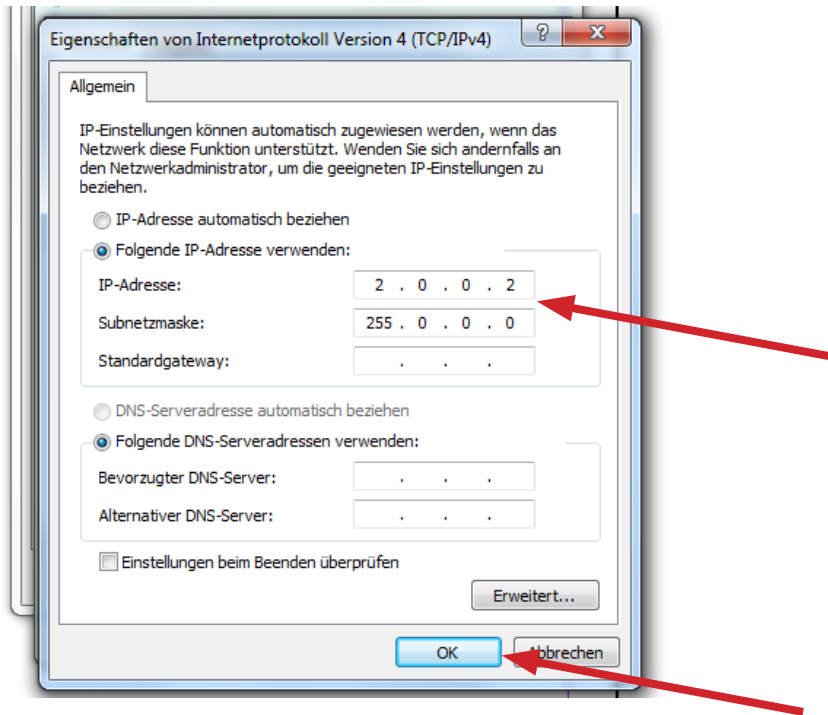


4. Search for the TCP/IPv4 entry, select it and click on "Eigenschaften"/"Properties".

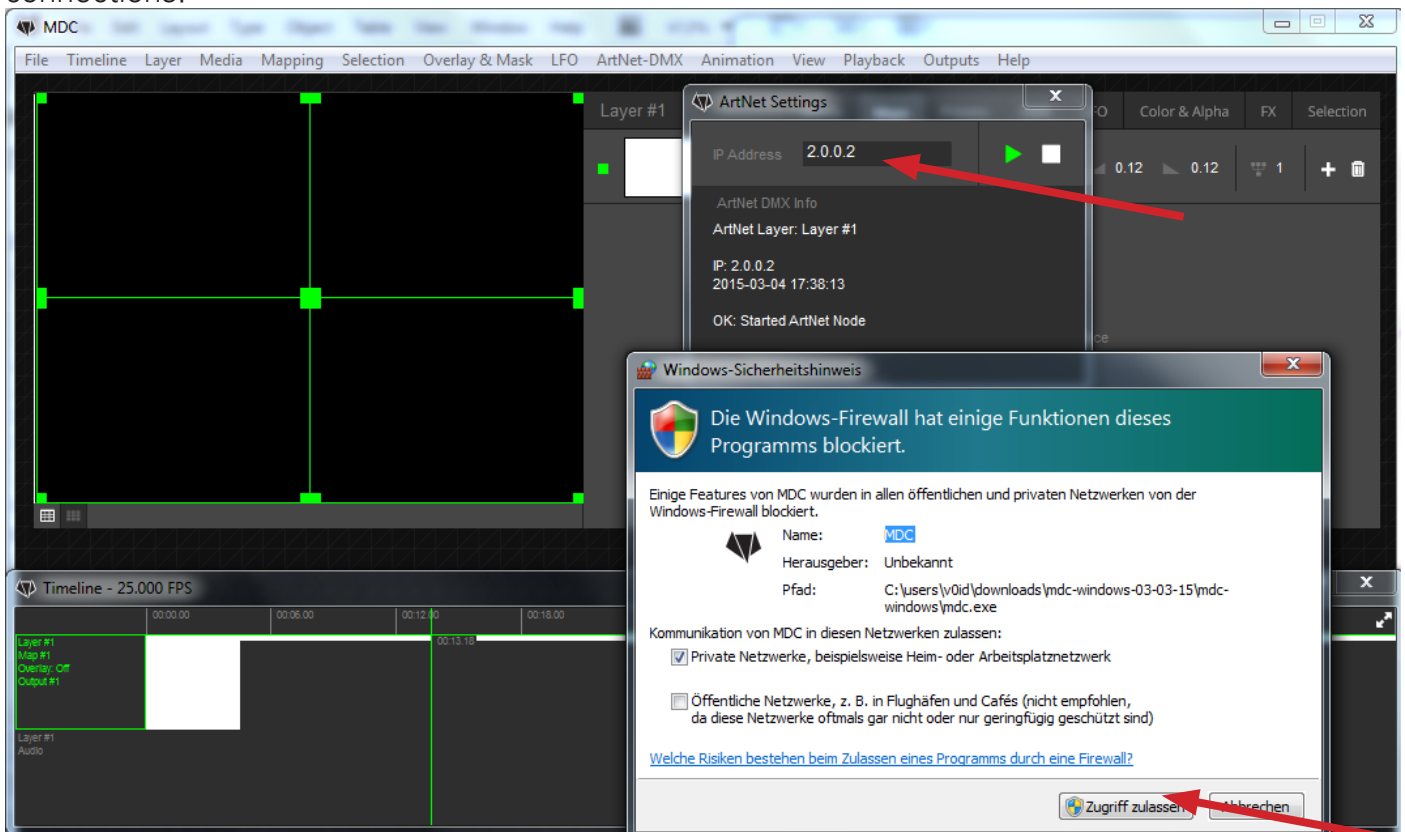




5. Enter the IP-Address "2.0.0.2" and the Netmask "255.0.0.0" Leave all other fields empty and click "OK".

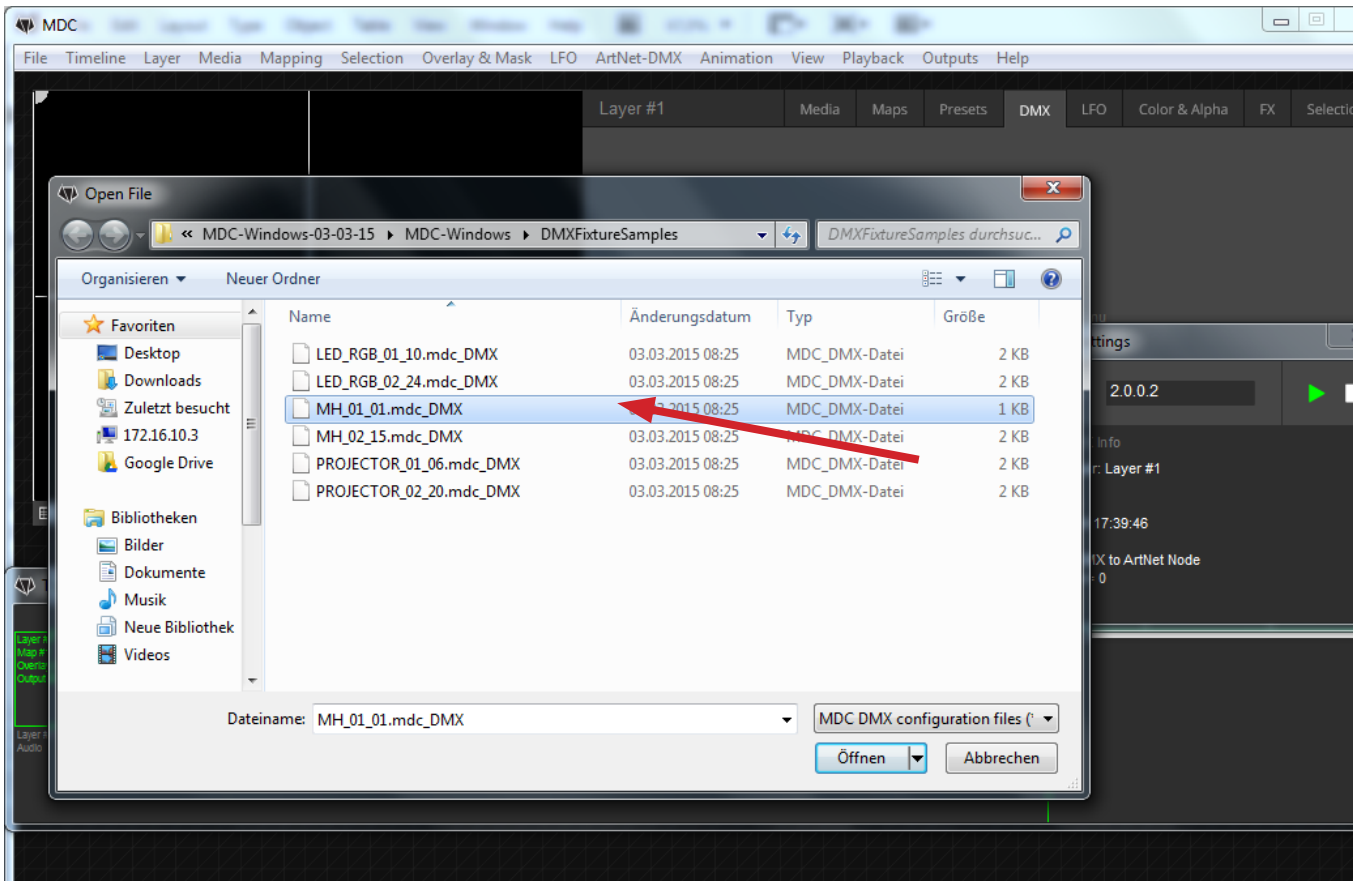


6. Navigate to your MDC Installation and start MDC. Once it is started go to "ArtNet-DMX" -> "ArtNet Setting". In the IP Address field enter "2.0.0.2" (the IP of the network device on your PC). You can also use the mouse-wheel to search through the available devices. Once you are done click the "PLAY" button. Confirm the windows firewall message and allow all connections.

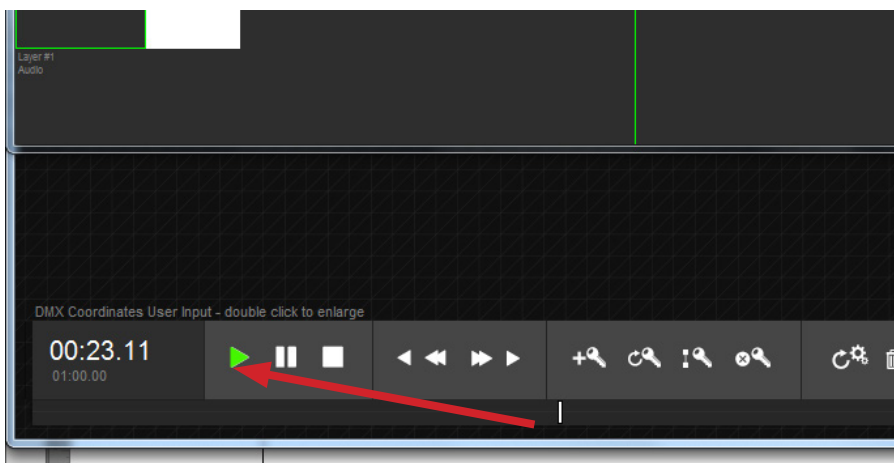




7. If you see the "OK. Started ArtNet node." message the connection is up and running. If you don't have a DMX-fixture in your MDC project you have to add the Mirror Head fixture. To do so open the DMX tab and double click into the tab-window. Navigate to the "DMXFixtureSamples" folder within your MDC directory and select "MH_01_01.mdc_DMX"

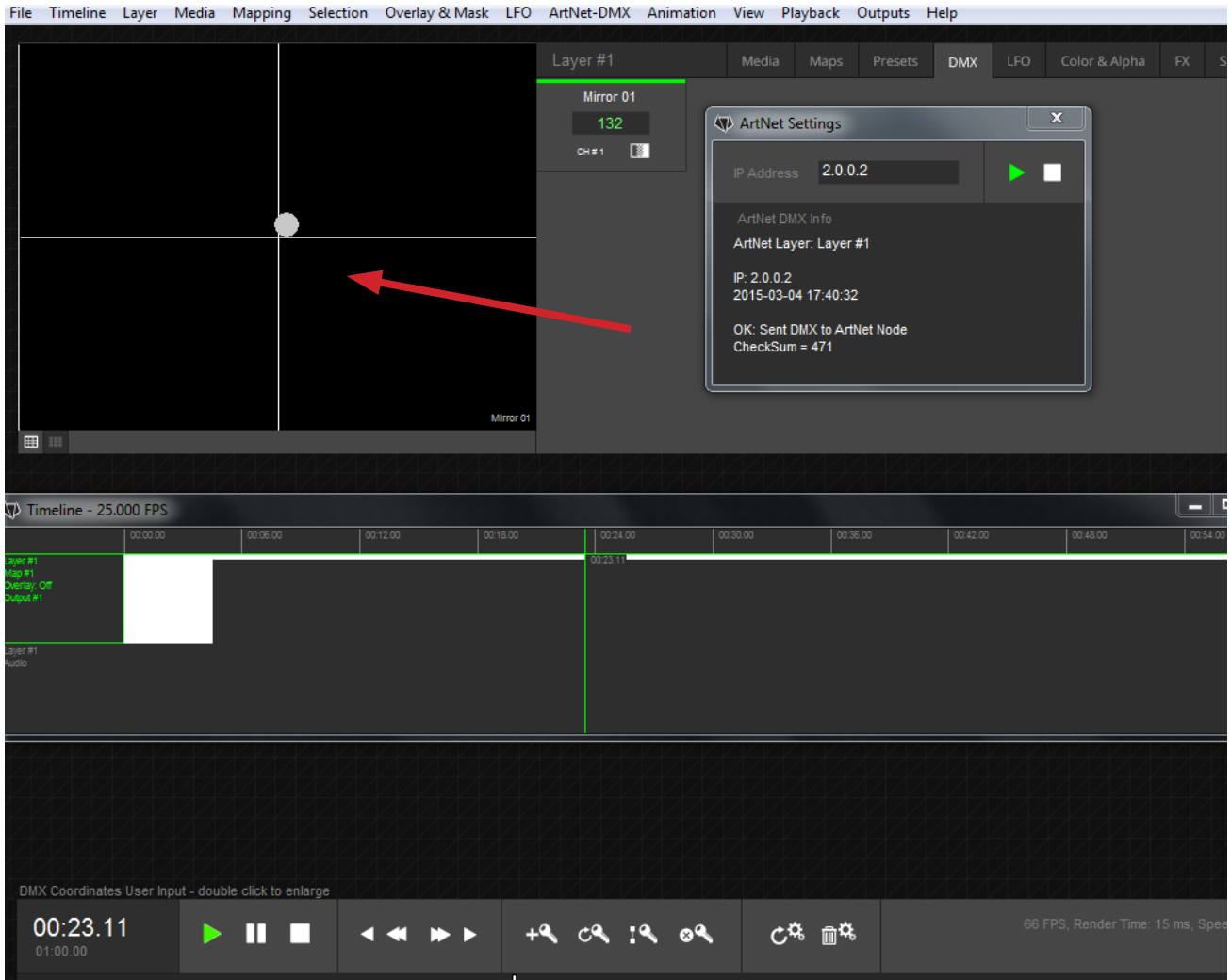


8. Press the PLAY button on the timeline control of MDC.





9. Now you can use the DMX PAN/TILT widget to move the Mirror Head Mirror!



10. For further help about MDC you can always use the "Help" pages which cover all the important concepts and shortcuts of MDC.

