

MDC-X Installation System

*** PROFESSIONAL USE ONLY ***

THE INSTALLATION SOFTWARE COMES WITH ABSOLUTELY NO
WARRANTY! USE AT YOUR OWN RISK!

Version 1.0

Important notes	3
Prepare the USB stick	4
Windows	4
Linux	4
Mac OS	4
Installing the system to the hard drive	5
Post install setup	11
Installing patches	11
Network setup	11
Test Licenses and/or Re-License	15
Basic MDC-X connection guide	17

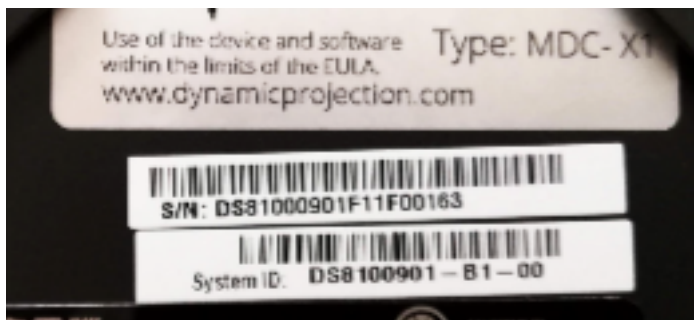
Important notes

For installing the factory image of the MDC-X to an MDC-X system you need a USB stick with a capacity of at least 8GB.

Please note that:

- The installation system is for professional use only - we recommend using the upgrade/restore service we offer; for more information please contact our office.
- All data on the MDC-X will be destroyed during the installation so make sure you backup all your data before you proceed with the installation!
- After the installation you have to configure the network interfaces.
- You might have to re-license the system by email which takes some time.
- Some additional setup steps are required.
- You need a Win32, MacOS or Linux system to write the installation image to the USB stick.

The installation system works only with MDC-X hardware models with serial numbers starting with (see the backside of the MDC-X): DS81.... , DS87...., DH170.... Or DH370....



THE INSTALLATION SOFTWARE COMES WITH ABSOLUTELY NO WARRANTY! USE AT YOUR OWN RISK!

In addition to this manual we offer tutorial videos which cover the whole process of installing the MDC-X system. Please see our support page for more information on that.

<https://www.dynamicprojection.com/mdc-support/>

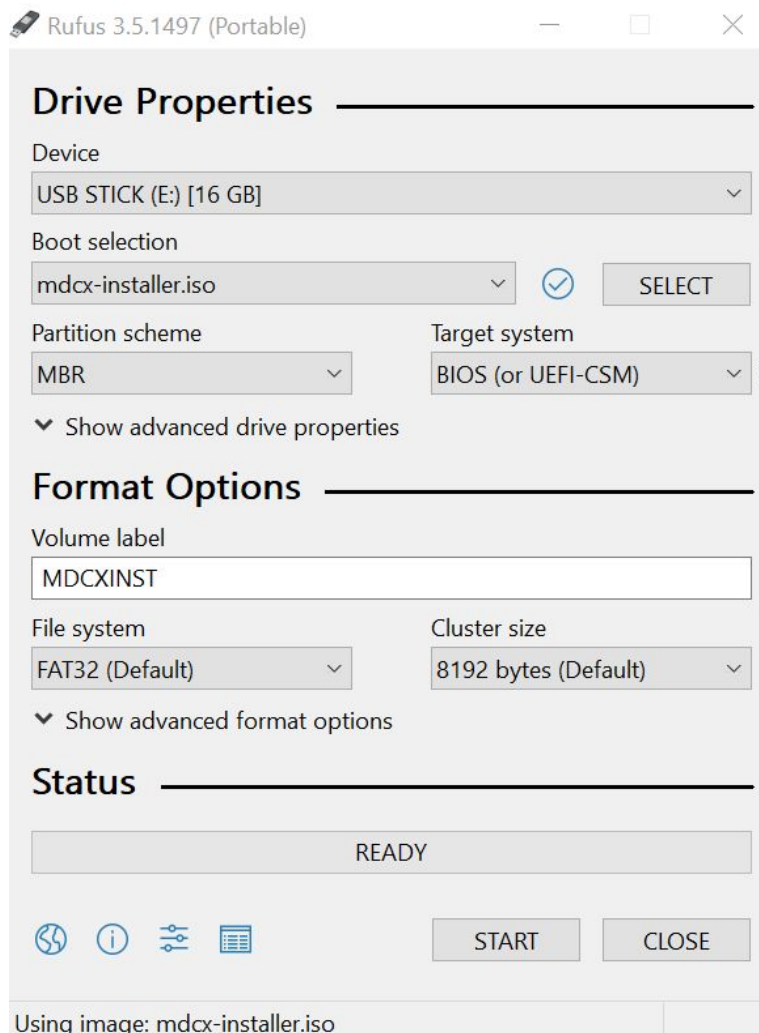


Prepare the USB stick

Make sure you have a USB stick with at least 8GB ready.

Windows

1. Download the MDC-X installation image (zip file) and the USB flash tool (Rufus) from <http://www.dynamicprojection.com/mdc-support/>
2. Extract the Zip archive.
3. Put the USB stick into your computer and start the flash program (Rufus).
4. Select the "Drive/Device (1)" and the "Image/Boot selection (2)" [SELECT]
5. Click "Start" to start the writing process.
6. Confirm you want to write the image in "ISO MODE".



ISOHybrid image detected



The image you have selected is an 'ISOHybrid' image. This means it can be written either in ISO Image (file copy) mode or DD Image (disk image) mode. Rufus recommends using ISO Image mode, so that you always have full access to the drive after writing it. However, if you encounter issues during boot, you can try writing this image again in DD Image mode.

Please select the mode that you want to use to write this image:

- Write in ISO Image mode (Recommended)
- Write in DD Image mode

OK

Cancel

Linux

1. Download the MDC-X installation image from <http://www.dynamicprojection.com/mdc-support/>
2. Write the image to the USB stick using either "dd" or a image writer program like "USB Image Writer".

Mac OS

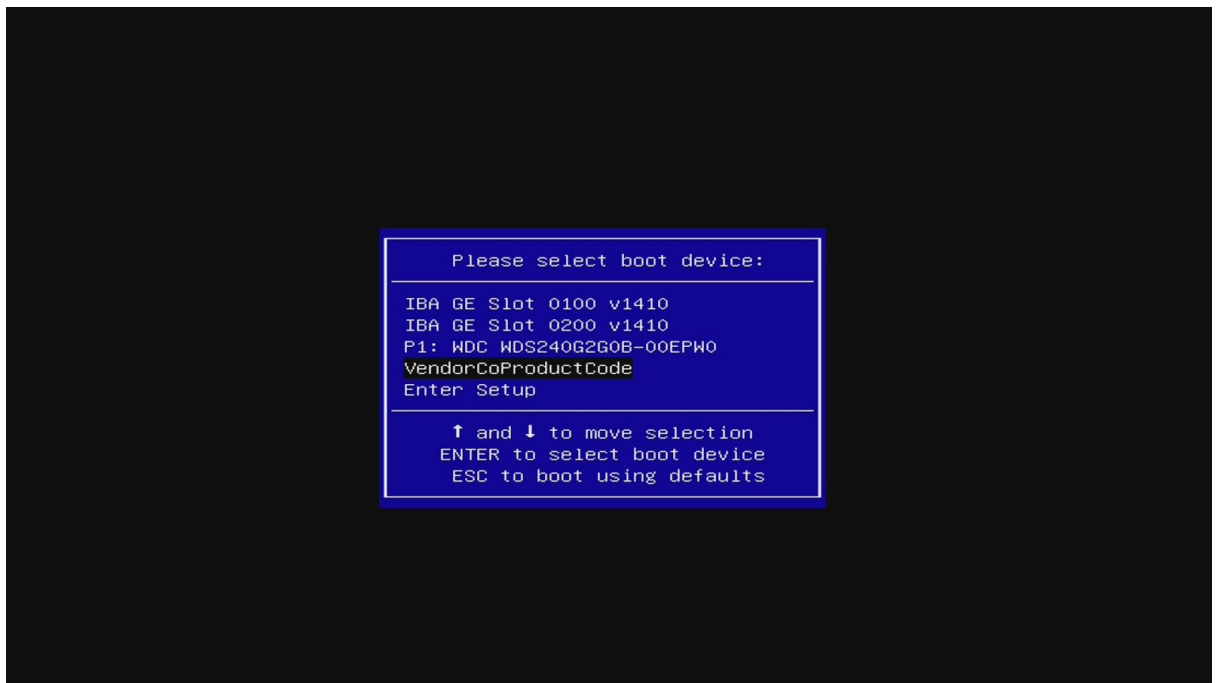
1. Download the MDC-X installation image and the USB flash tool (unetbootin) from <http://www.dynamicprojection.com/mdc-support/>
2. Install the unetbootin software
3. Put the USB stick into your computer and start the flash program (unetbootin).
4. Select the "Drive (1)" and the "Image (2)"
5. Click "Start" to start the writing process.

Please note that unetbootin does not honor the actual bootloader of the MDC-X installation image so only the "Install" part works. If you want a fully working USB stick please use a Windows or Linux system to create it.

Installing the system to the hard drive

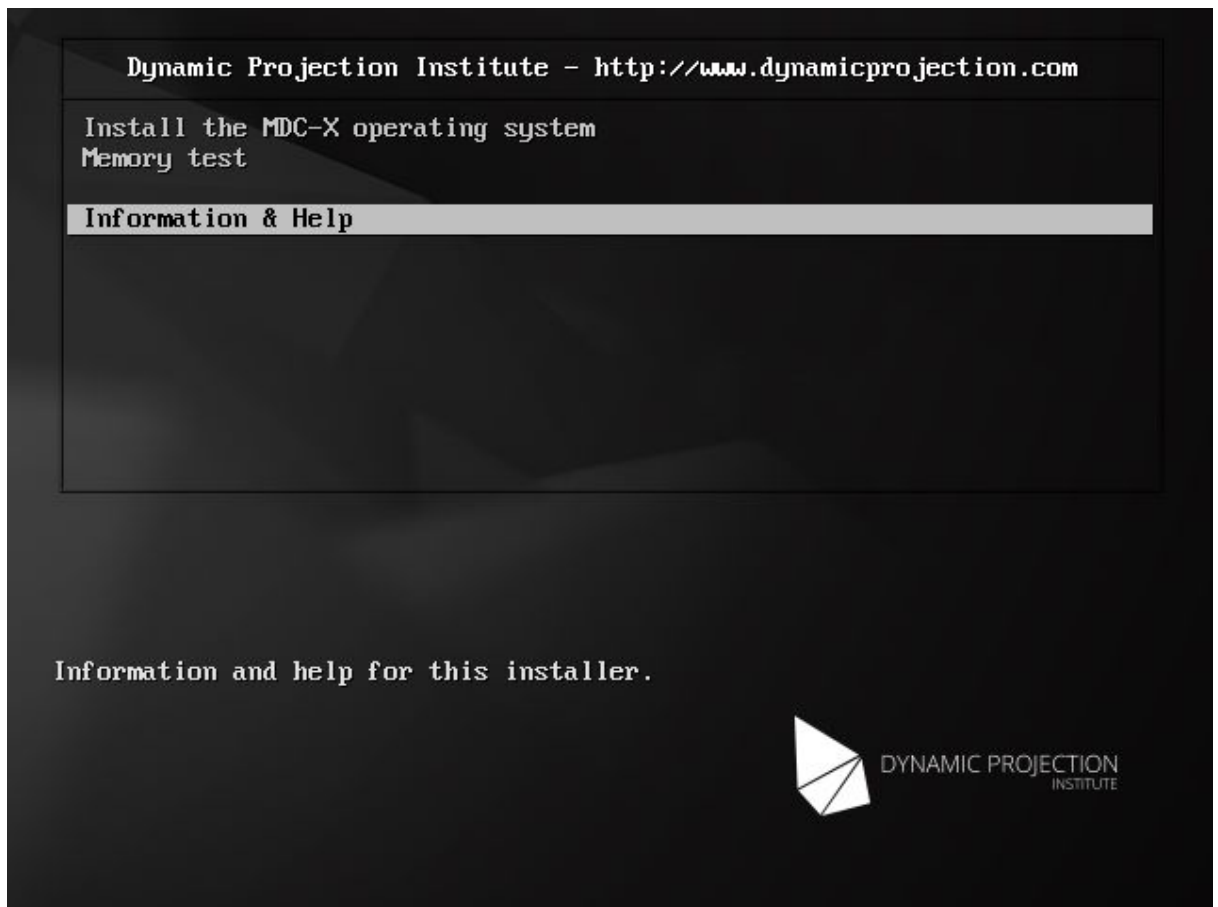
Plug a monitor into the dedicated monitor port of the MDC-X; connect a keyboard and mouse.

1. Plug the USB stick into one of the USB ports at the front.
2. Turn on the MDC-X by pressing the button at the front.
3. Hold down the F7 key on the keyboard until the following screen shows up.



4. Now select the drive that is the USB device. The naming of this device differs between different USB stick vendors. The USB stick is not a device starting with IB... or P1... In the above case the USB stick is "VendorCoProductCode". Use the up/down arrow keys to select the device and press ENTER to boot.

5. Now the main boot screen with three selections will show up.
 - Install the MDC-X operating system : This will start the installation process
 - Memory test : This starts a stress test on the CPU and memory
 - Information & Help: Some information on the installer



a. Memory test:

```

Memtest86+ 5.01 | Intel(R) Core(TM) i5-4570 CPU @ 3.20GHz
CLK: 3192 MHz (X64 Mode) | Pass 0%
L1 Cache: 32K 212801 MB/s | Test 35% #####
L2 Cache: 256K 57000 MB/s | Test #2 [Address test, own address Parallel]
L3 Cache: 6144K 42560 MB/s | Testing: 1024K - 1024M 1023M of 1024M
Memory : 1024M 16453 MB/s | Pattern: address | Time: 0:00:00
-----
Core#: 0 (SMP: Disabled) | RAM: 0 MHz (DDR3- 0) - BCLK: 99
State: / Running... | Timings: CAS 0-0-0-0 @ 64-bit Mode
Cores: 1 Active / 1 Total (Run: All) | Pass: 0 Errors: 0
-----
S S
(ESC)exit (c)configuration (SP)scroll_lock (CR)scroll_unlock

```


- Reboot: Reboot the system
- Shutdown: Turn off the system.

```
www.dynamicprojection.com

+-----+ MDC-X-9003 +-----+
| Please choose...
|
| Install  Install the MDC-X image
| Sysinfo  Information about this system
| Reboot   Reboot the system
| Shutdown Turn system off
|
|                                     <Ok>
+-----+-----+
```

8. Select "Install" to continue with the installation. You now have to select the harddrive where the system shall be installed. Usually (unless you have a custom built system) you only see one drive here - select it using SPACE, press TAB to continue to the OK button - press ENTER to continue.

```
www.dynamicprojection.com

+-----+ MDC-X-9003 +-----+
| Select installation target
|
| (*) _dev/sda 34GB_VBOX_HARDDISK
|
|                                     <Ok>
+-----+-----+
```

9. If you are absolutely sure confirm this page - the system will start with erasing the disk and reinstalling the system. Installation time depends on the speed of the USB stick and the hard drive. It usually takes about 10 minutes.

```
www.dynamicprojection.com

+-----+ MDC-X-9003 +-----+
|
| Really install to /dev/sda ?
|
|                                     <OK NO!>
|
+-----+
```

10. After the installation is finished a information screen will show up. This is for informational purpose only. The content of the screen will be copied to the USB stick as "install.log".

```
www.dynamicprojection.com

+-----+ MDC-X-9003 +-----+
|
| using /dev/sda
| Try to backup license...
| using /dev/sda
| Copy data...please wait
| Copy of data done!
| using /dev/sda
| Setting up swap space version 1, size = 16000217088 bytes
| UUID=cc1323a8-b1a8-404c-8235-3402b93b28e5
| using /dev/sda
| Installing post-install files to the Desktop...
| OPEN\ AFTER\ INSTALLATION\
| Install licenses if available...
|
|                                     <Ok>
|
+-----+
```

11. Pressing ENTER on the last page will shutdown the system. The installation of the MDC-X system is now finished and the system will reboot. After the reboot is

finished you have to follow the post-install procedure to finalize the setup.



Post install setup

After you have installed the MDC-X image the system reboots and you will see the MDC-X main desktop. On the desktop there is one additional folder that was placed by the installer called “POSTINSTALL”, you will find additional patches and scripts there. If the folder is empty it means that at the time when the image was made there were no additional patches available.

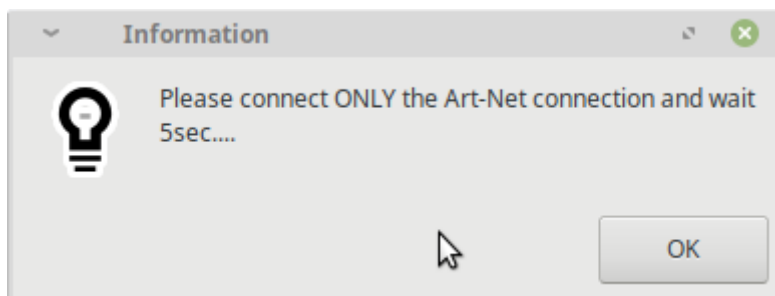
Please follow the instructions below carefully to finalize the installation.

Installing patches

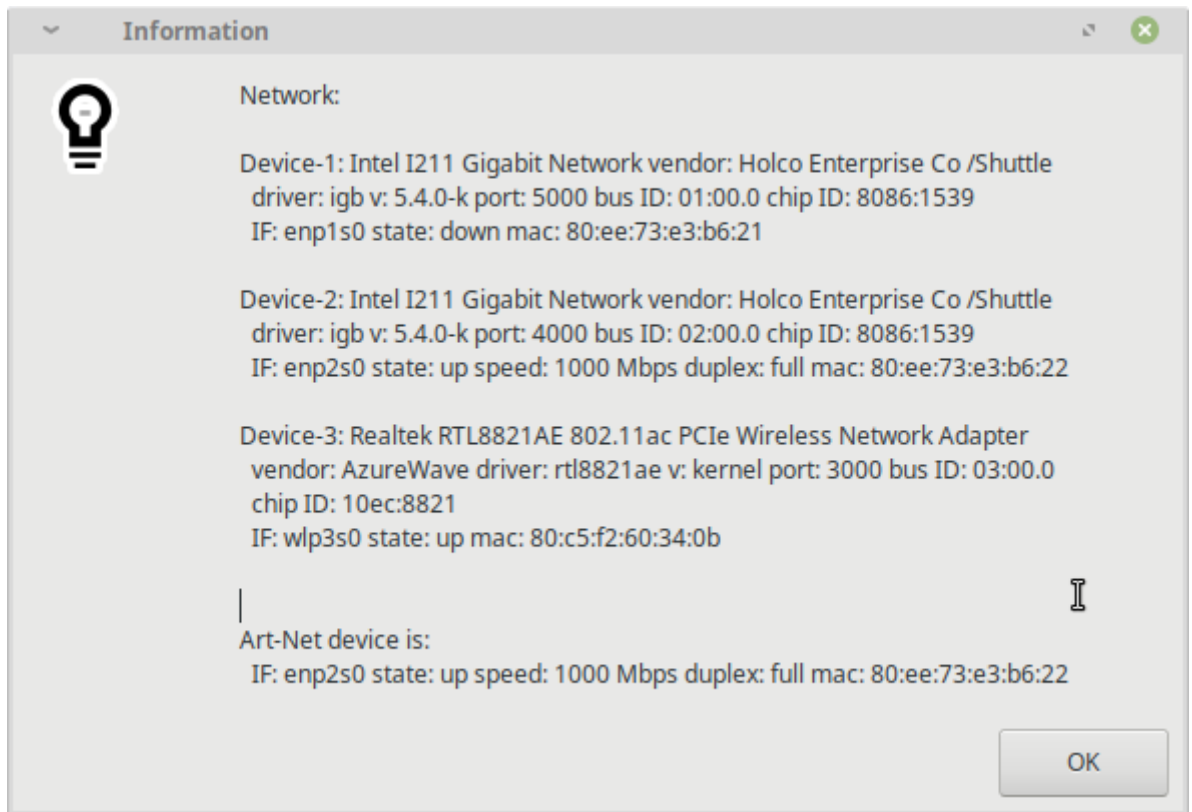
Patches and additional scripts are placed in the “POSTINSTALL” folder on the desktop. To install a patch double click on the .deb file. Press “Install” in the lower right and enter the password “mdcmdc”. The patches are the same as the ones you can download from the MDC-X support website. Please check the website later on and install additional patches if needed. After the installation of the patch please reboot the system!

Network setup

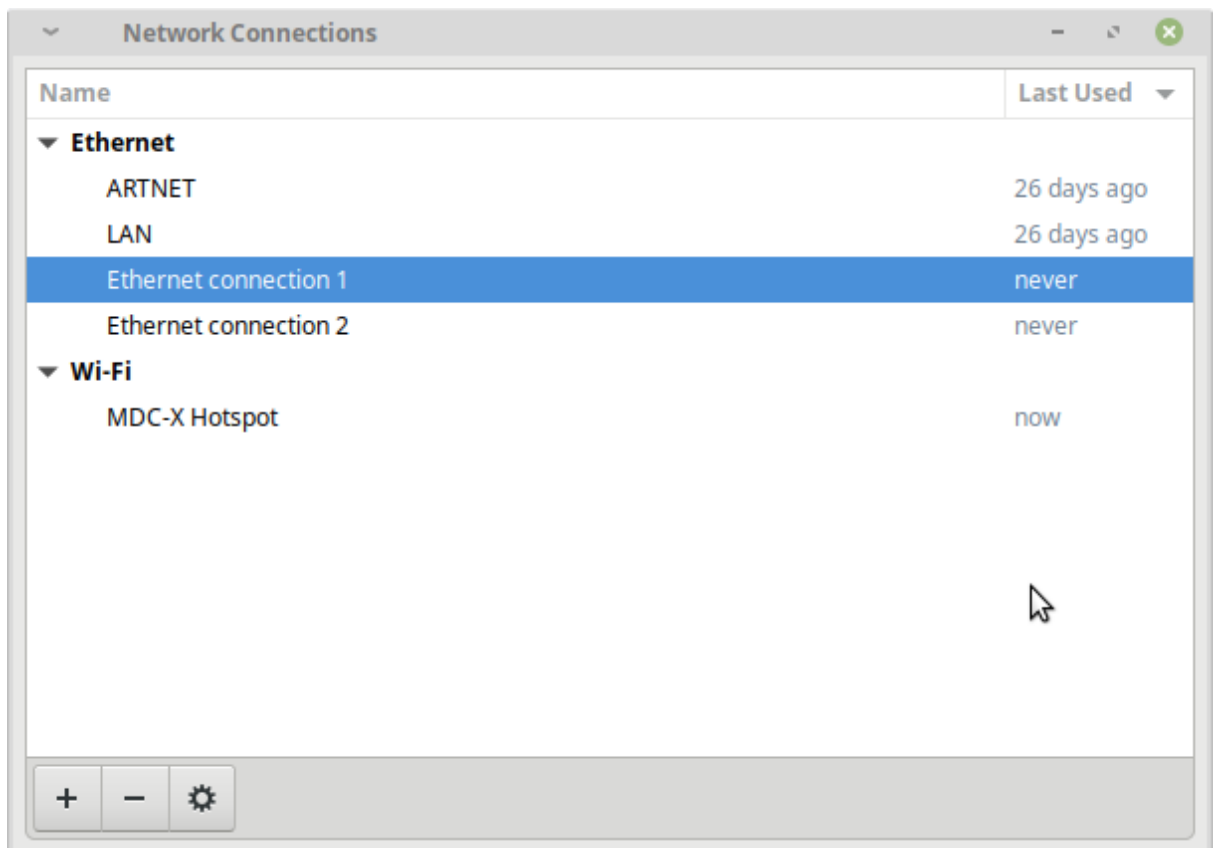
1. Plug a network cable to the “Art-Net” port of the MDC-X and connect it to a Mirror Head or network switch. Make sure those are turned on and the network is alive.
2. To setup the network connections please launch the “mdc-network-detect.sh” script from the “POSTINSTALL” folder by double click it.
3. Confirm that you have plugged in the ART-NET connection.



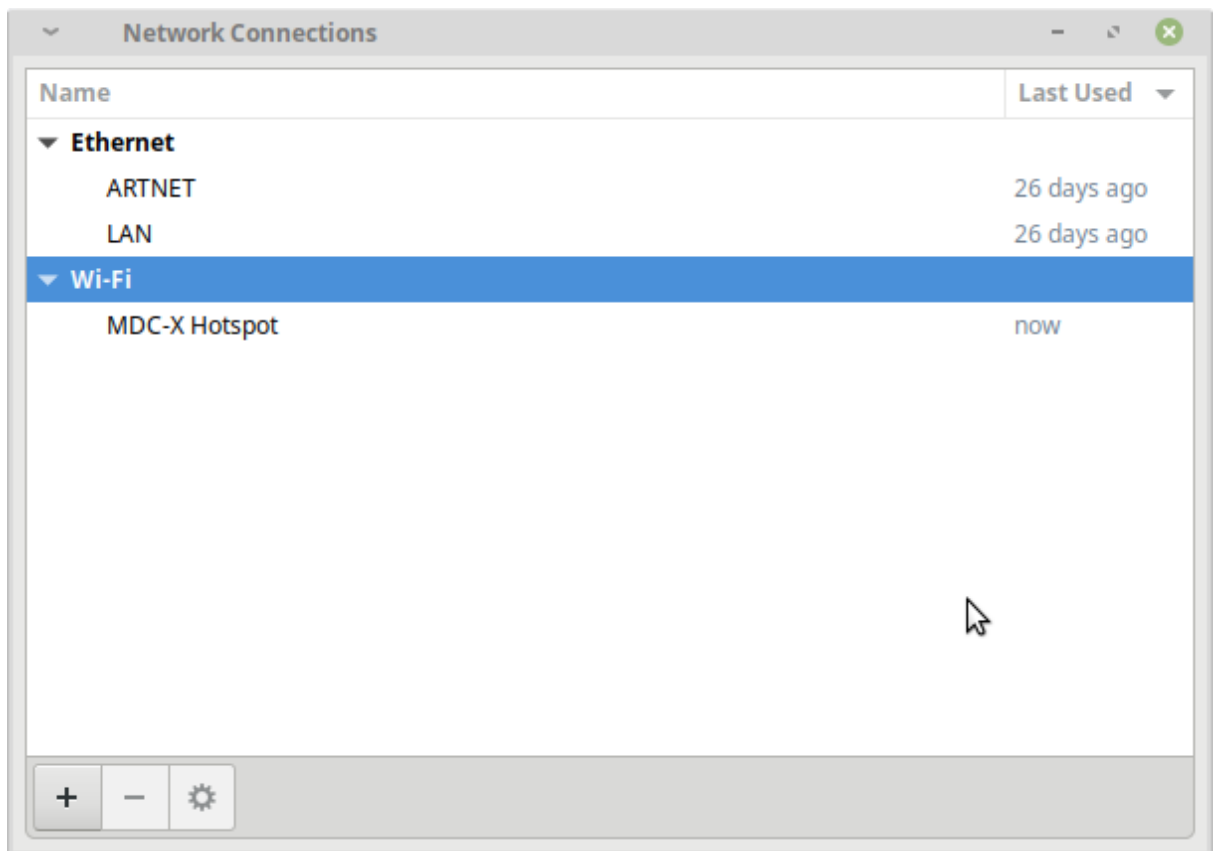
4. The next screen will show you all connections on the system, but only one of the is in the UP state; that is the Art-Net connection. At the bottom of the screen you see this connection with the corresponding MAC address. Do not close this window when you go to the next step!



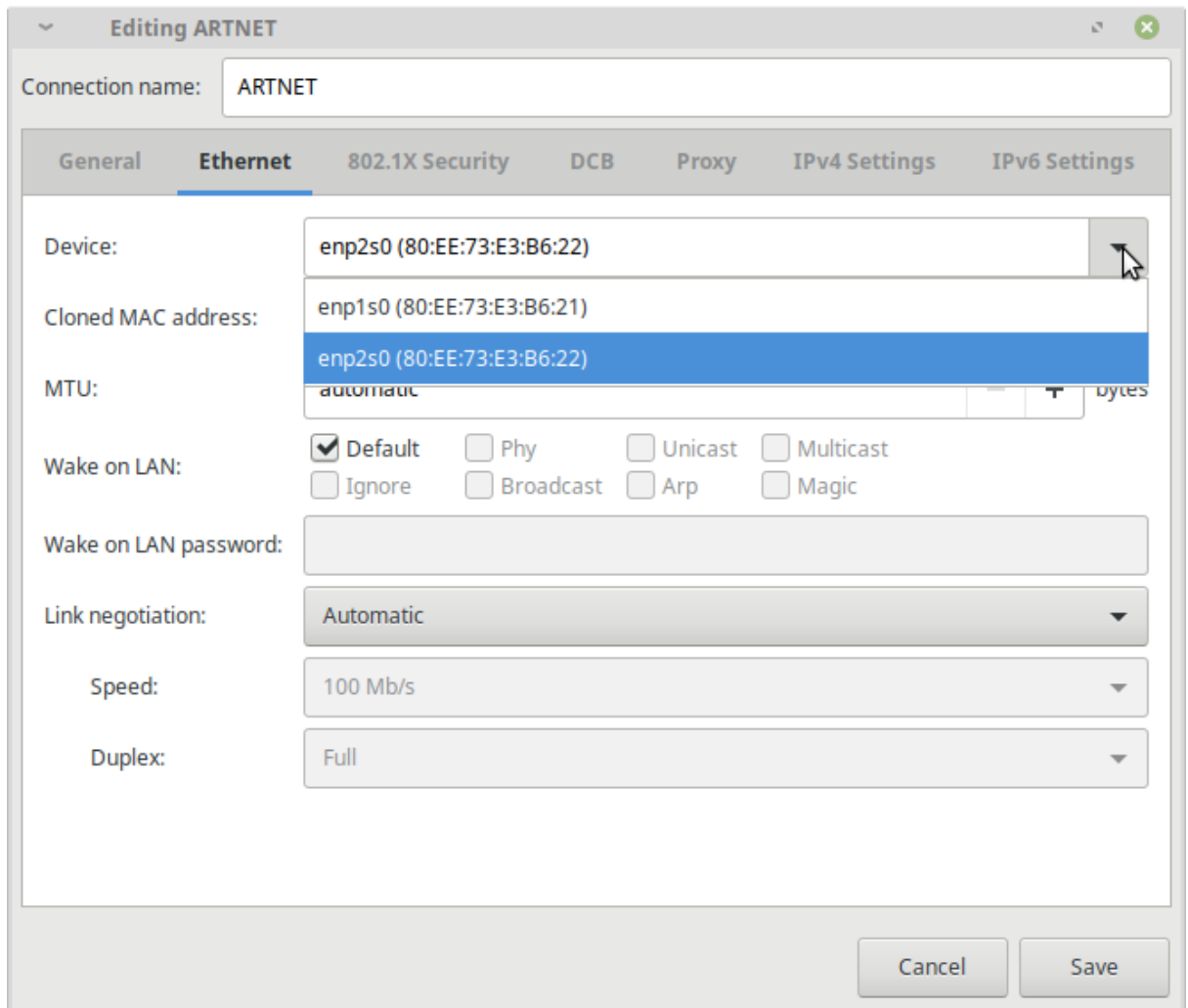
- Open the MDC Launcher and start "3.7 Network Connection". When the window opened delete all connections except "ARTNET", "LAN" and "MDC-X Hotspot". Before deletion:



After deletion:

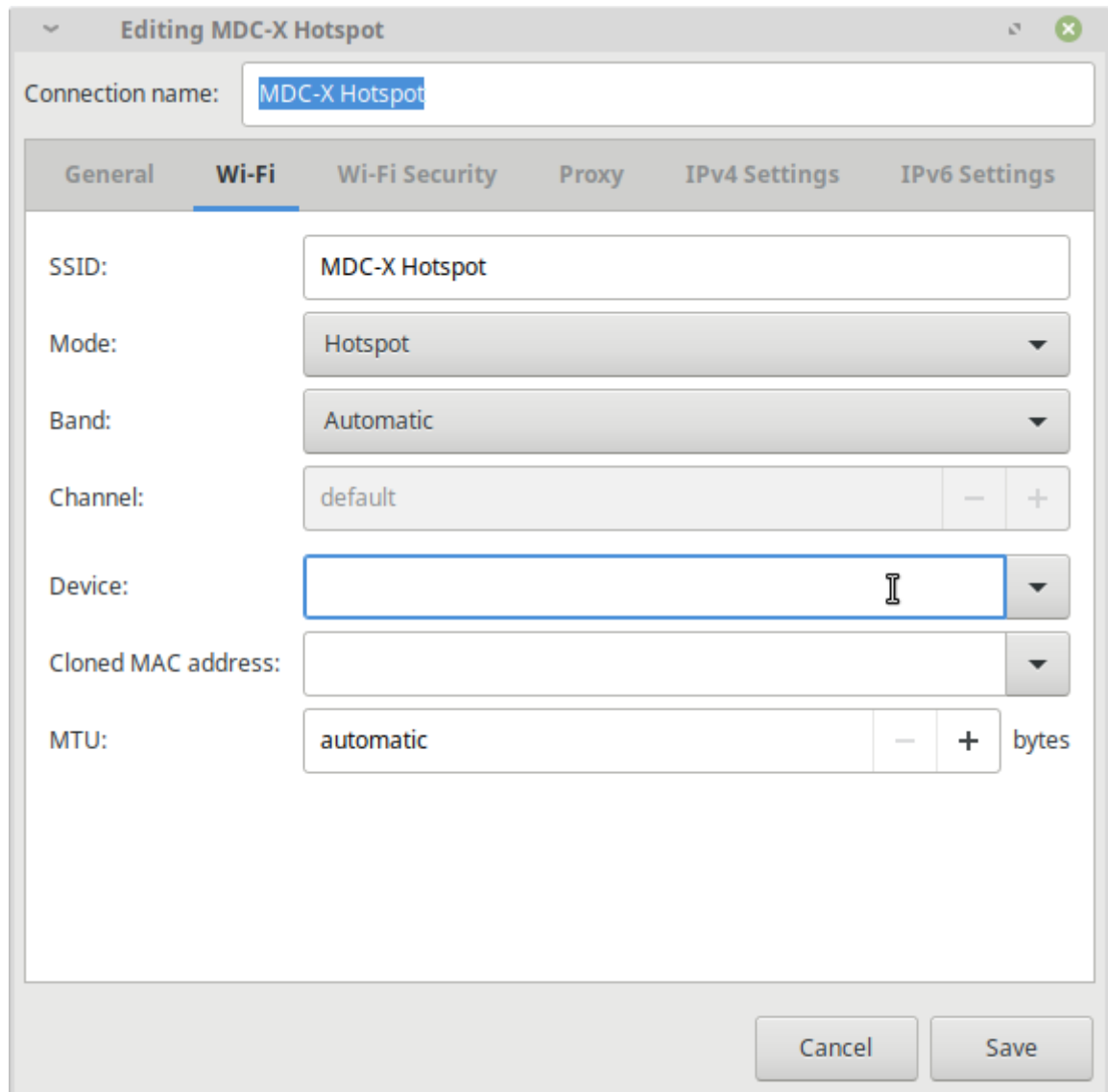


- Once all connections are deleted, double click the "ARTNET" connection and change "Device:" to the device and EXACT MAC address that was detected before with the connection program.



- Now open the "LAN" connection and select the other device so that it matches the MAC address of the device that is not the WiFi adapter.

- Repeat the process for the WiFi connection. Be careful that the “Device” on the WiFi page is somewhere else in the dialog!



- After you have finished, reboot the system.

Test Licenses and/or Re-License

If a licensed system was detected during the installation the installer tries to move the license to the new installation. This is only possible within the same generation of software releases. To check if you do have a license for MDC and MDC-Touch (you will only have one if you had one before!) follow the instructions:

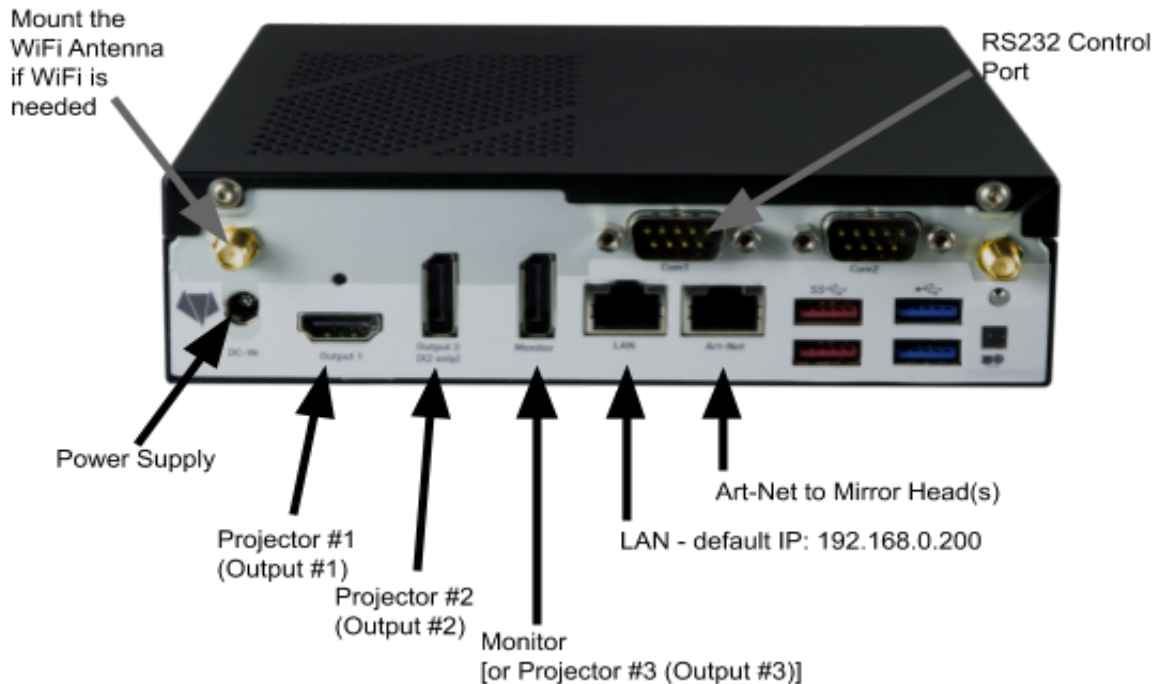
- Use “3.5 Generate Template” on the MDC-Launcher, select “One Mirror Head” and click OK.
- Now use “1.1 Select a MDC Template” and choose “Generic-Template-M1-00.mdc” (we now assume here that only the Monitor is

connected).

3. Press "PLAY" in the lower left of the MDC program and move the main window to the side so you see the main output screen. If you see a "unlicensed version - www.dynamicprojection.com" string in the lower left corner you have to re-license your system. Otherwise your license was ported successfully and the installation is finished.
4. To re-license your software quit the MDC program and start "5.0 System Info" on the MDC-Launcher. This will generate all data you need. Press OK.
5. You will now find a file called "sysinfo.txt" in the Documents folder. Copy this file to a USB stick or any other media and send it to us with an email. You **MUST** include the following data:
 - **Subject: MDC-X LICENSE REQUEST**
 - **COMPANY NAME**
 - **YOUR NAME**
 - **SERIAL NUMBER OF THE MDC-X SYSTEM (on the BOTTOM)**
 - **THE "serial.txt" FILE AS AN ATTACHMENT**License requests without all the informations above can not be processed! If you need to re-license multiple units please send an email for each unit!
6. After a short time you will receive the license files back which must be installed to the system:
 - The file "RC.txt" must be copied to the "/opt/mdc/" folder.
 - The file "mdctouch.lic" must be copied to "/opt/mdcweb/" (only if you do have a MDC-Touch license)

Basic MDC-X connection guide

Projector(s), Monitor and Mirror Head units must be connected according to the diagram below in order to work correctly in a factory default setup.



Default Login for NoMachine Remote Desktop Software or local system user: User: mdcuser, Password: mdcmdc

Default Admin Login for MDC-Touch: User: admin, Password: 1234

Default "MDC-X Hotspot" WiFi login credentials: mdcmdc123

Default IP of the LAN port: 192.168.0.200/255.255.255.0

Default IP of the ArtNet Port: 2.0.0.2/255.0.0.0

Default IP of the WiFi "MDC-X Hotspot": 10.42.0.1