



#TheMH14 - Mirror Head 14

Panasonic PT-DZ21K2 / RZ21K / RQ13K / RZ12K Series

#TheMH14 - A tool the industry has been waiting for. You can now align and move projection positions and create fascinating shows with 3-chip DLP projectors by Panasonic, like the PT-RZ21K, PT-DZ21K2, PT-RQ13K, PT-RZ12K and the PT-RQ22K Series.

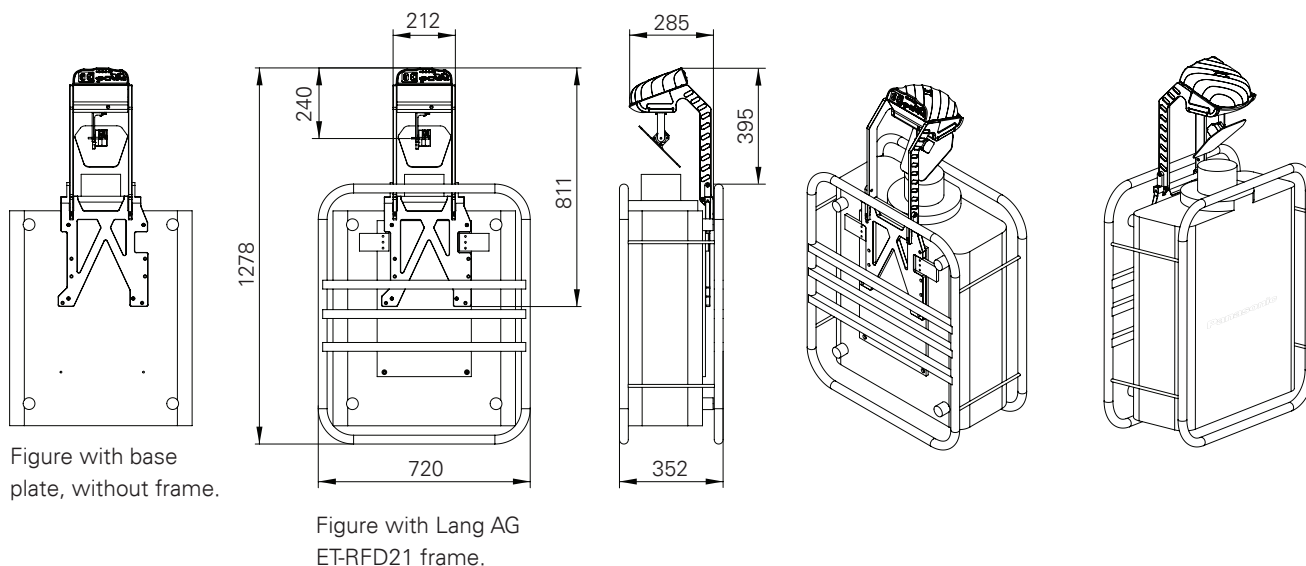
Use your projectors to their full potential. – #TheMH14 is the pair of wings for your projector. Now you can easily move projection positions to reach more surfaces and project bright and colourful content across an entire room.

Optimized for professional show integrators – You can easily mount a base plate to any Mirror Head 14 compatible projector. Once mounted, your projector is ready for #TheMH14.

Ideal for rental and touring. – #TheMH14 is 100% stack frame compatible with a quick, easy and secure mounting done in less than a minute while you are on the road.

It is important to note. – #TheMH14 has been designed and is produced in Austria to ensure a high-level of performance. Dynamic Projection Institute has designed this powerful tool to operate at industry-levels of efficiency and we guarantee accurate projection positioning.

SPECIFICATIONS MIRROR HEAD 14 WITH PANASONIC PT-DZ21K2



MECHANICAL SPECIFICATIONS WITH PT-DZ21K2

Fixture dimensions (W/D/H)	720 x 352 x 1278mm
Fixture total with Lang AG frame	73,0kg
Projector PT-DZ21K + Lens	48,0kg
Mirror Head 14	6,6kg
Projector Frame Lang AG ET-RFD21	18,5kg

ELECTRICAL SPECIFICATIONS

INPUT POWER
100-240V / 2-1A / 50-60Hz,
Max. 10A (3-prong C14 male socket)
POWER CONSUMPTION
Max. 17W
Standby mode 3W

PROJECTOR COMPATIBILITY

Panasonic 3-Chip DLP projectors
 PT-DZ21K / DS20K / DW17K
 PT-DZ21K2 / DS20K2 / DW17K2 / DZ16K2
 PTRZ21K / RS20K
 PTRZ12K / RS11K
 PTRQ13K
 PTRQ22K

IMPORTANT NOTE: For information about the specifications, operations and use of the projector carefully read the instruction manual of your projector.
<https://panasonic.net/cns/projector/products/lineup/#large-venue>

CAUTION: For the use of closed-type riggings such as half-coupler clamps secure the fixture with a safety cable (or other secondary attachments) that is approved for the weight of the fixture, so that the safety cable will hold the fixture if the primary attachment fails.

LENS COMPATIBILITY LIST / ET-D75LExx

---	50	90 / 95	6	10 (+)	20	30	40	8 (++)
T.R.	0,7	0,4	1,0-1,4	1,3-1,7	1,7-2,4	2,4-4,7	4,6-7,4	7,8-13,8
MH14	-	-	-	X	X	X	X	-

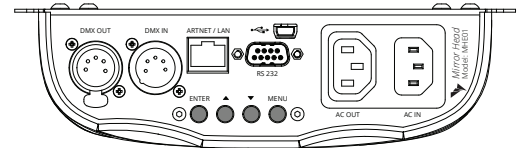
NOTE: All lens IDs do have the prefix "ET-D75LExx".

(+) Due to optical reasons we do not recommend this lens below a throw ratio of 1.6.

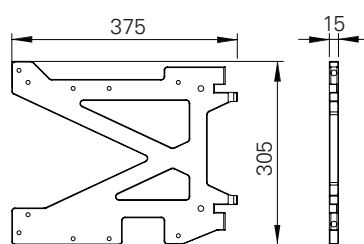
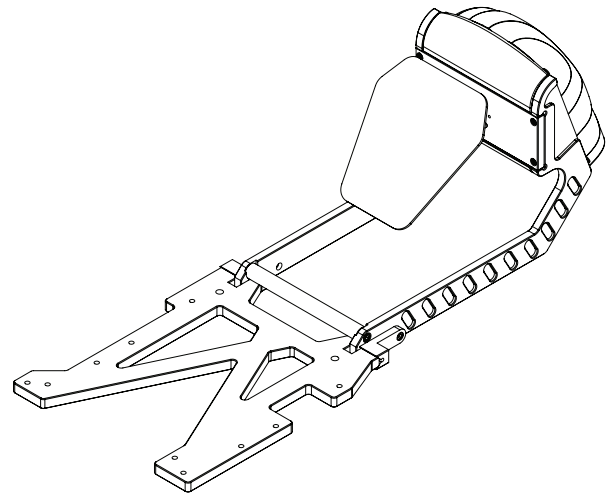
(++) To be compatible use the Mirror Head Lens Extension MHZ-LE8.

MIRROR HEAD SPECIFICATIONS / FEATURES

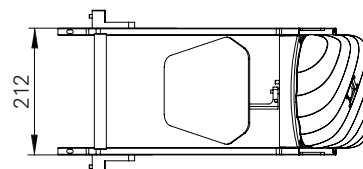
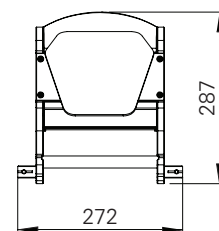
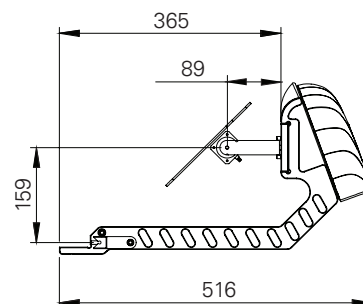
- High resolution 16bit Pan / Tilt mirror movement
- DMX-512 control over 14 DMX channels
- DMX-IN and DMX-OUT /Through port (5-pin male and female XLR connectors)
- 14 DMX channels are required to control the unit
- Art-Net™ connection (RJ45) (Art-Net™ designed by and Copyright Artistic License Holdings Ltd.)
- High resolution micro step motors with maintenance free direct drive
- Self calibrating mirror position for high accuracy
- Absolute reposition accuracy smaller than 0.03°
- Movement accuracy: Pan and Tilt from the same direction to the programmed point within approximately 0.01°
- RS232 remote control connection for projector (D-sub 9 male) - cable included
- Flash-able firmware (Mini USB OTG)
- High resolution LED-Display for easy configuration
- LED-Display back-light auto turn off for energy saving
- LED-Display Flip / Flop mode for easy reading in difficult positions
- Coated mirror for optimum reflection ~98% refraction factor
- Optimized mirror optics for the specific projector
- Passive cooled system (excluding projector)
- Environmental tolerances: Ambient operating temperature range: 5° – 35°C, Humidity: 20% – 80% (non-condensing)
- Quick, secure and easy snap-in mounting
- Anodized light metal construction



Control unit / MHE01



MH14 base plate



ITEM NUMBER: MH14

- Package dimensions (W/D/H): 585 x 380 x 380mm
- Package weight: 9kg
- Package includes: Manual, Mirror Head unit, RS232 cable, A/C power cable, Mounting screws and spacers, Loctite screw lock, Metric Hex key 2mm and 5mm

To protect the environment,
please try to recycle the packing
material as much as possible.