



#TheMH17 – Mirror Head 17

Panasonic PT-RCQ10 and PT-RZ990 Series

#TheMH17 - A tool the industry has been waiting for. You can now align and move projection positions and create fascinating shows with 1-chip DLP projectors by Panasonic, like the PT-RCQ10 / PT-RZ120 / PT-RZ990 and many more.

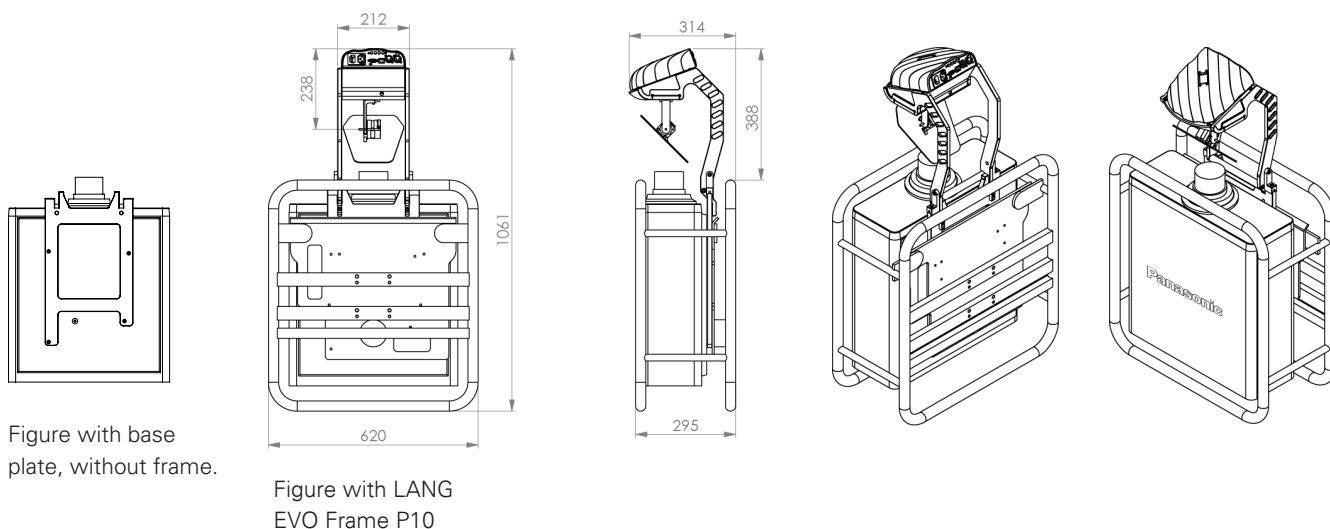
Use your projectors to their full potential. – #TheMH17 is the pair of wings for your projector. Now you can easily move projection positions to reach more surfaces and project bright and colourful content across an entire room.

Optimized for professional show integrators – You can easily mount a base plate to any compatible projector. Once mounted, your projector is ready for #TheMH17.

Ideal for rental and touring. – #TheMH17 is 100% stack frame compatible with a quick, easy and secure mounting done in less than a minute with a projector frame, like the Lang AG frame ET-RFD91 or EVO P10 and the Rigtec X-10 Frame.

It is important to note. – #TheMH17 has been designed and is produced in Austria to ensure a high-level of performance. Dynamic Projection Institute has designed this powerful tool to operate at industry-levels of efficiency and we guarantee accurate projection positioning.

SPECIFICATIONS MIRROR HEAD 17 WITH PANASONIC PT-RZ990



MECHANICAL SPECIFICATIONS WITH PT-RZ990

Fixture dimensions (W / D / H)	620 x 295 x 1061 mm
Fixture total with Lang AG frame	42,4 kg
Projector PT-RZ990 + Lens	23 kg
Mirror Head 17	6 kg
Projector Frame LANG EVO Frame P10	13,4 kg

ELECTRICAL SPECIFICATIONS

INPUT POWER
100-240V / 2-1A / 50-60Hz,
Max. 10A (3-prong C14 male socket)
POWER CONSUMPTION
Max. 17W
Standby mode 3W

PROJECTOR COMPATIBILITY

Panasonic 1-Chip DLP projectors
PT-RCQ10 / RCQ80
PT-RZ120B / RZ120W
PT-RZ990 / RZ970 / RW930 / RX100
PT-RZ890
PT-RZ790 / RZ770 / RW730
PT-RZ690 / RZ670 / RZ660 / RW630
And many more

IMPORTANT NOTE: For information about the specifications, operations and use of the projector carefully read the instruction manual of your projector.
<https://panasonic.net/cns/projector/products/rz990/>

CAUTION: For the use of closed-type riggings such as half-coupler clamps secure the fixture with a safety ca-ble (or other secondary attachments) that is approved for the weight of the fixture, so that the safety cable will hold the fixture if the primary attachment fails.

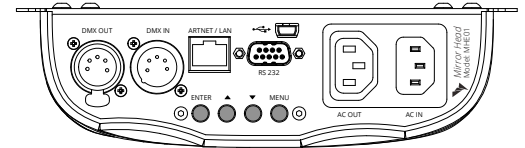
LENS COMPATIBILITY LIST / ET-DLExx

---	105 (++)	150 (+)	170	250	350	450	055 (+)	085 (+)	030/35
T.R.	1,0-1,3	1,3-1,9	1,7-2,4	2,3-3,6	3,7-5,7	5,4-8,6	0,8	0,8-1,1	0,38
MH17	X	X	X	X	X	X	X	X	-

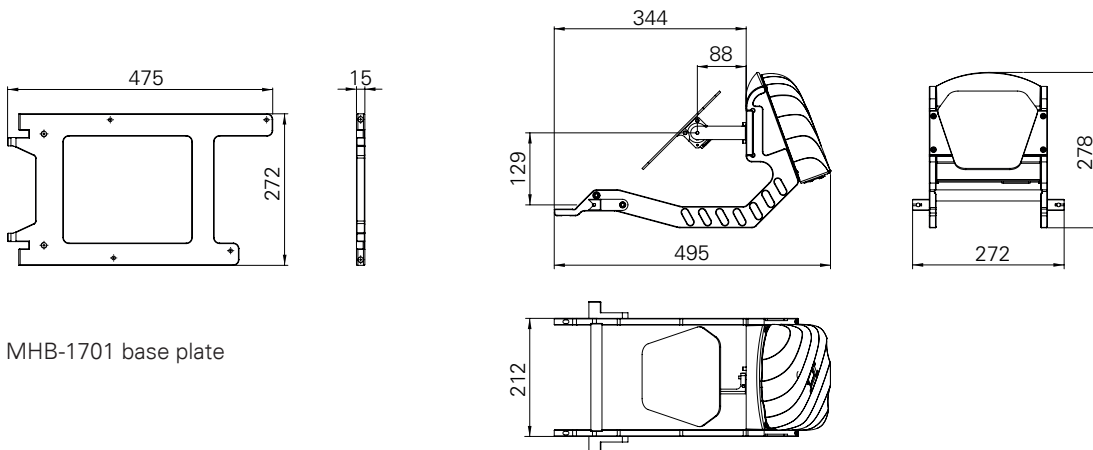
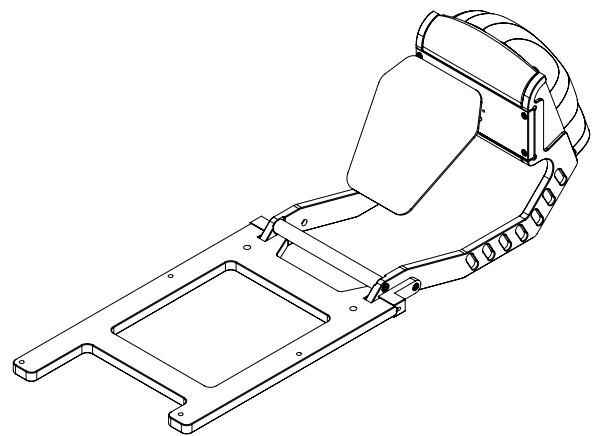
NOTE: All lens IDs do have the prefix "ET-DLExx".
(+) Due to optical reasons we do not recommend this lens below a throw ratio of 1.6.
(++) To turn projection direction 90 degree, we do not recommend this lens below a throw ratio of 1.3.

MIRROR HEAD SPECIFICATIONS / FEATURES

- High resolution 16bit Pan /Tilt mirror movement
- DMX-512 control over 14 DMX channels
- DMX-IN and DMX-OUT /Through port (5-pin male and female XLR connectors)
- 14 DMX channels are required to control the unit
- Art-Net™ connection (RJ45) (Art-Net™ designed by and Copyright Artistic License Holdings Ltd.)
- High resolution micro step motors with maintenance free direct drive
- Self calibrating mirror position for high accuracy
- Absolute reposition accuracy smaller than 0.03°
- Movement accuracy: Pan and Tilt from the same direction to the programmed point within approximately 0.01°
- RS232 remote control connection for projector (D-sub 9 male)
- cable included
- Flash-able firmware (Mini USB OTG)
- High resolution LED-Display for easy configuration
- LED-Display back-light auto turn off for energy saving
- LED-Display Flip / Flop mode for easy reading in difficult positions
- Coated mirror for optimum reflection ~98% refraction factor
- Optimized mirror optics for the specific projector
- Passive cooled system (excluding projector)
- Environmental tolerances: Ambient operating temperature range: 5°–35°C, Humidity: 20%–80% (non-condensing)
- Quick, secure and easy snap-in mounting
- Anodized light metal construction



Control unit / MHE01



MHB-1701 base plate

ITEM NUMBER: MH17

- Package dimensions (W / D / H): 585 x 380 x 380 mm
- Package weight: 9 kg
- Package includes: Manual, Mirror Head unit, RS232 cable, A/C power cable, Mounting screws and spacers, Loctite screw lock, Metric Hex key 2 mm and 5 mm

For more technical information:
<https://www.dynamicprojection.com/mh-support/>



To protect the environment,
please try to recycle the packing
material as much as possible.

