

Promote
yourself



#TheMH19 - Mirror Head 19 NEC PA653UL + PA803UL

#TheMH19 – A tool the industry has been waiting for. – You can now align and move projection positions and create fascinating shows with 3-chip LCD-Laser projectors by NEC, like the PA653UL and the PA803UL.

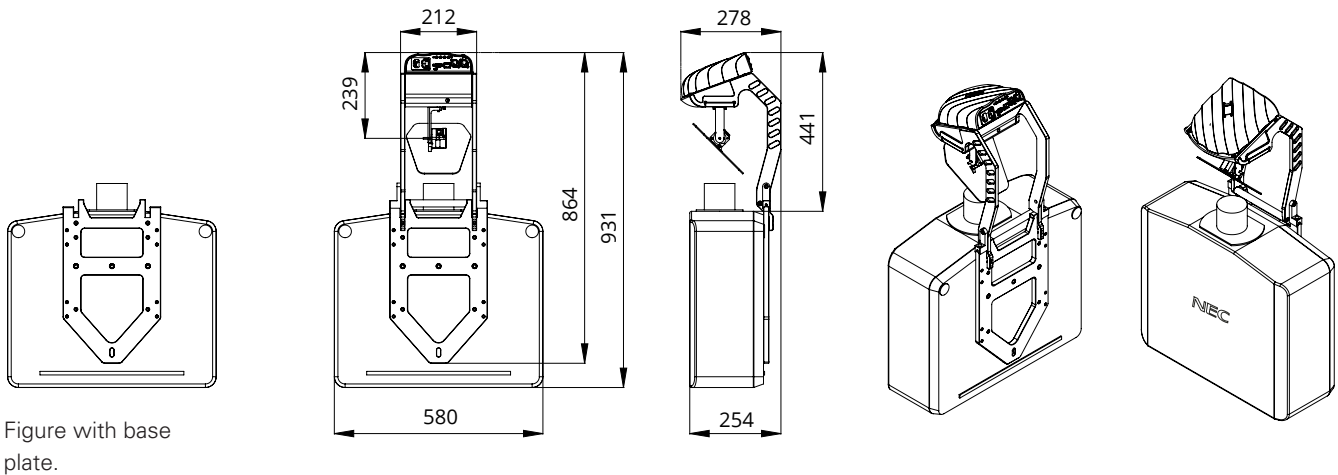
Use your projectors to their full potential. – #TheMH19 is the pair of wings for your projector. Now you can easily move projection positions to reach more surfaces and project bright and colourful content across an entire room.

Optimized for professional show integrators. – You can easily mount your projector to the base plate to use closed-type riggings such as half-coupler clamps or any VESA mount.

Ideal for rental and touring. – #TheMH19 is equipped with a quick, easy and secure mounting done in less than a minute while you are on the road.

It is important to note. – #TheMH19 has been designed and is produced in Austria to ensure a high-level of performance. Dynamic Projection Institute has designed this powerful tool to operate at industry-levels of efficiency and we guarantee accurate projection positioning.

SPECIFICATIONS MIRROR HEAD 19 WITH NEC-PA653UL



MECHANICAL SPECIFICATIONS WITH PA653UL

Fixture dimensions (W / D / H)	931 x 580 x 278mm
Fixture total	27 kg
Projector NEC PA653UL + Lens NP41ZL	20 kg
Mirror Head 19	7 kg

ELECTRICAL SPECIFICATIONS

INPUT POWER
100-240V / 2-1A / 50-60Hz,
Max. 10A (3-prong C14 male socket)
POWER CONSUMPTION
Max. 17W
Standby mode 3W

PROJECTOR COMPATIBILITY

NEC-PA653UL

NEC 3LCD Laser Projector
WUXGA (1920 x 1200)
6500 ANSI Lumen
2 different Lenses
TR. range: 1.3 – 5.93:1

NEC-PA803UL

NEC 3LCD Laser Projector
WUXGA (1920 x 1200)
8000 ANSI Lumen
2 different Lenses
TR. range: 1.3 – 5.93:1

LENS COMPATIBILITY

NP41ZL

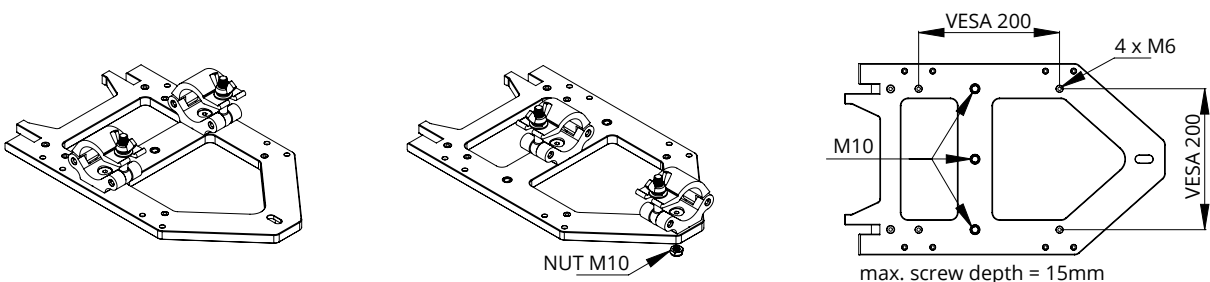
TR. range: 1.3 – 3.02:1

NP43ZL

TR. range: 2.99 – 5.93:1

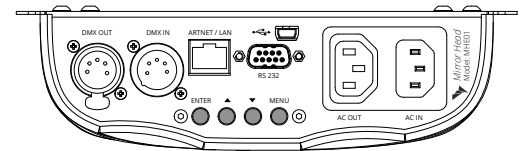
IMPORTANT NOTE: For information about the specifications, operations and use of the projector carefully read the instruction manual of your projector.
<https://www.nec-display-solutions.com/p/de/de/products/details/t/Projektoren/Laserprojektoren/rp/PA653UL.xhtml>

CAUTION: For the use of closed-type riggings such as half-coupler clamps or any VESA mount secure the fixture with a safety cable (or other secondary attachments) that is approved for the weight of the fixture, so that the safety cable will hold the fixture if the primary attachment fails.

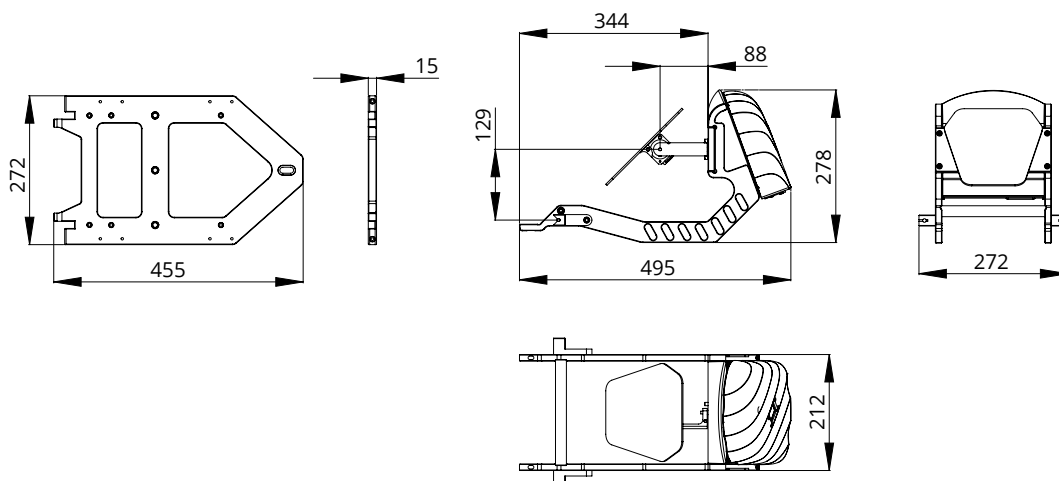
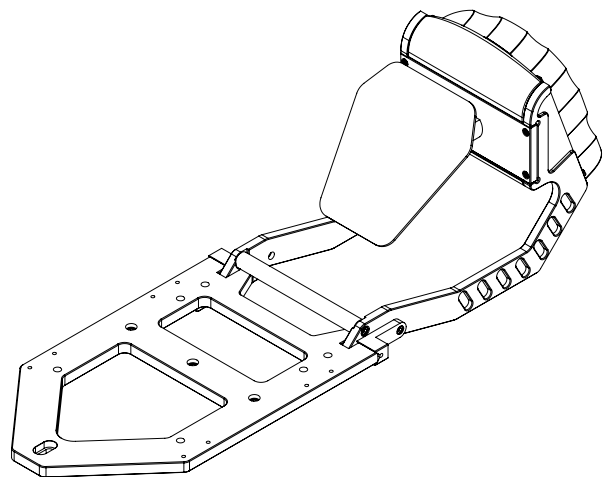


MIRROR HEAD SPECIFICATIONS / FEATURES

- High resolution 16bit Pan /Tilt mirror movement
- DMX-512 control over 14 DMX channels
- DMX-IN and DMX-OUT /Through port
(5-pin male and female XLR connectors)
- 14 DMX channels are required to control the unit
- Art-Net™ connection (RJ45) (Art-Net™ designed by
and Copyright Artistic License Holdings Ltd.)
- High resolution micro step motors with maintenance
free direct drive
- Self calibrating mirror position for high accuracy
- Absolute reposition accuracy smaller than 0.03°
- Movement accuracy: Pan and Tilt from the same direction to the
programmed point within approximately 0.01°
- RS232 remote control connection for projector (D-sub 9 male)
- cable included
- Flash-able firmware (Mini USB OTG)
- High resolution LED-Display for easy configuration
- LED-Display back-light auto turn off for energy saving
- LED-Display Flip / Flop mode for easy reading in difficult positions
- Coated mirror for optimum reflection ~98% refraction factor
- Optimized mirror optics for the specific projector
- Passive cooled system (excluding projector)
- Environmental tolerances: Ambient operating temperature
range: 5°–35°C, Humidity: 20%–80% (non-condensing)
- Quick, secure and easy snap-in mounting
- Anodized light metal construction



Control unit / MHE01



ITEM NUMBER: MH19

- Package dimensions (W / D / H): 585 x 380 x 380 mm
- Package weight: 9.2 kg
- Package includes: Quick Installation Guide MH19, Mirror Head unit,
RS232 cable, A/C power cable, Mounting screws and spacers,
Loctite screw lock, Metric Hex key 2 mm and 5 mm



To protect the environment,
please try to recycle the packing
material as much as possible.

