

Promote
yourself



#TheMH19 - Mirror Head 19

SHARP / NEC PA703UL, PA804UL, PA1004UL

#TheMH19 – A tool the industry has been waiting for. – You can now align and move projection positions and create fascinating shows with 3-chip LCD-Laser projectors by SHARP / NEC, like the PA703UL, PA804UL and PA1004UL.

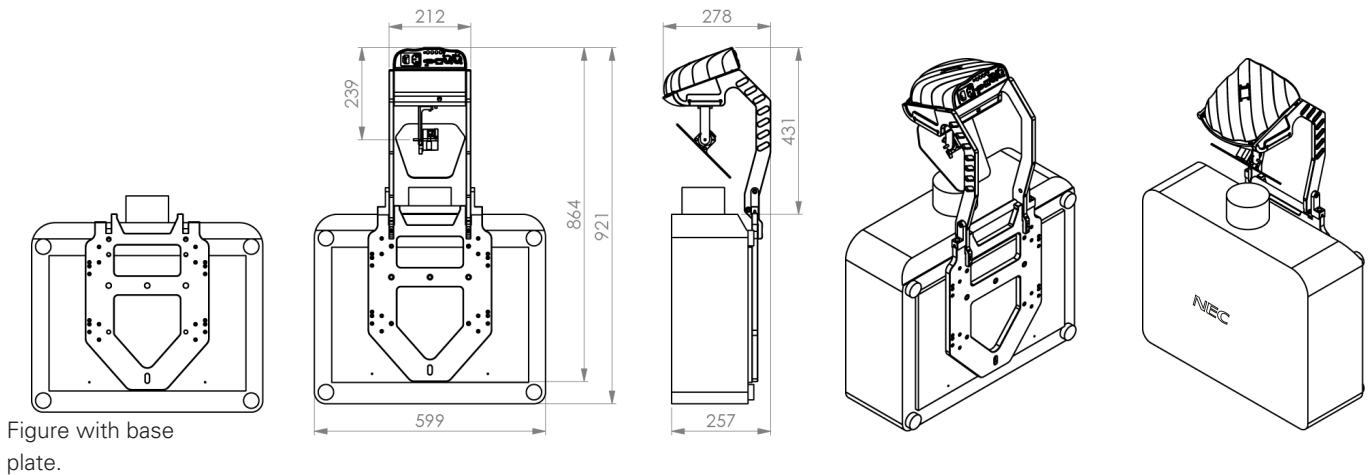
Use your projectors to their full potential. – #TheMH19 is the pair of wings for your projector. Now you can easily move projection positions to reach more surfaces and project bright and colourful content across an entire room.

Optimized for professional show integrators. – You can easily mount your projector to the base plate to use closed-type riggings such as half-coupler clamps or any VESA mount.

Ideal for rental and touring. – #TheMH19 is equipped with a quick, easy and secure mounting done in less than a minute while you are on the road.

It is important to note. – #TheMH19 has been designed and is produced in Austria to ensure a high-level of performance. Dynamic Projection Institute has designed this powerful tool to operate at industry-levels of efficiency and we guarantee accurate projection positioning.

SPECIFICATIONS MIRROR HEAD 19 WITH SHARP / NEC-PA703UL



MECHANICAL SPECIFICATIONS WITH PA703UL

| | |
|-------------------------------------|--------------------|
| Fixture dimensions (W / D / H) | 921 x 599 x 278 mm |
| Fixture total | 27 kg |
| Projector NEC PA703UL + Lens NP41ZL | 20 kg |
| Mirror Head 19 | 7 kg |

PROJECTOR COMPATIBILITY

SHARP / NEC PA-Series 3LCD Projectors
 PA703UL - PA804UL - PA1004UL
 NEC-PA653UL (discontinued)
 NEC-PA803UL (discontinued)

LENS COMPATIBILITY

| | |
|-------------------------|--------------------------|
| NP41ZL | NP43ZL |
| TR. range: 1.3 - 3.02:1 | TR. range: 2.99 - 5.93:1 |

Compatible with specific older lenses as well.

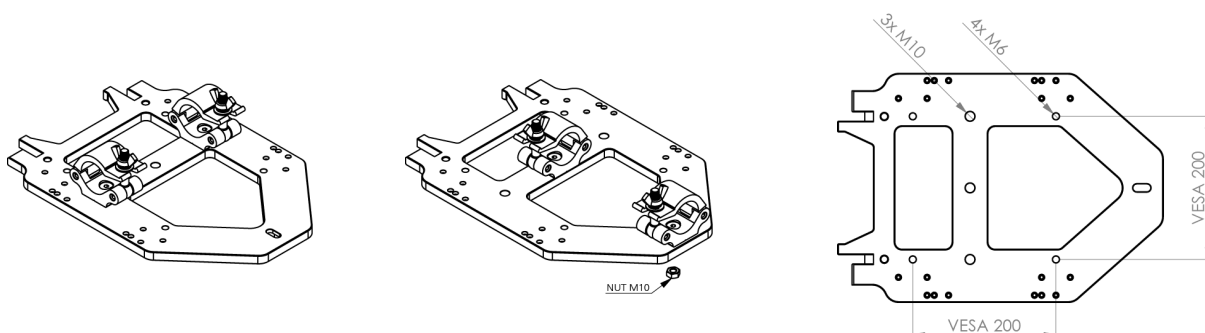
Note: Due to optical reasons, we recommend using a throw ratio above 1.6:1.

ELECTRICAL SPECIFICATIONS

INPUT POWER
 100-240V / 2-1A / 50-60Hz,
 Max. 10A (3-prong C14 male socket)
 POWER CONSUMPTION
 Max. 17W
 Standby mode 3W

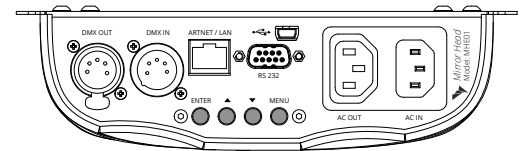
IMPORTANT NOTE: For information about the specifications, operations and use of the projector carefully read the instruction manual of your projector. <https://www.sharpnecdisplays.eu/p/fi/en/products/details/t/Projectors/Laser-Projectors/rp/PA703UL.xhtml>

CAUTION: For the use of closed-type riggings such as half-coupler clamps or any VESA mount secure the fixture with a safety cable (or other secondary attachments) that is approved for the weight of the fixture, so that the safety cable will hold the fixture if the primary attachment fails.

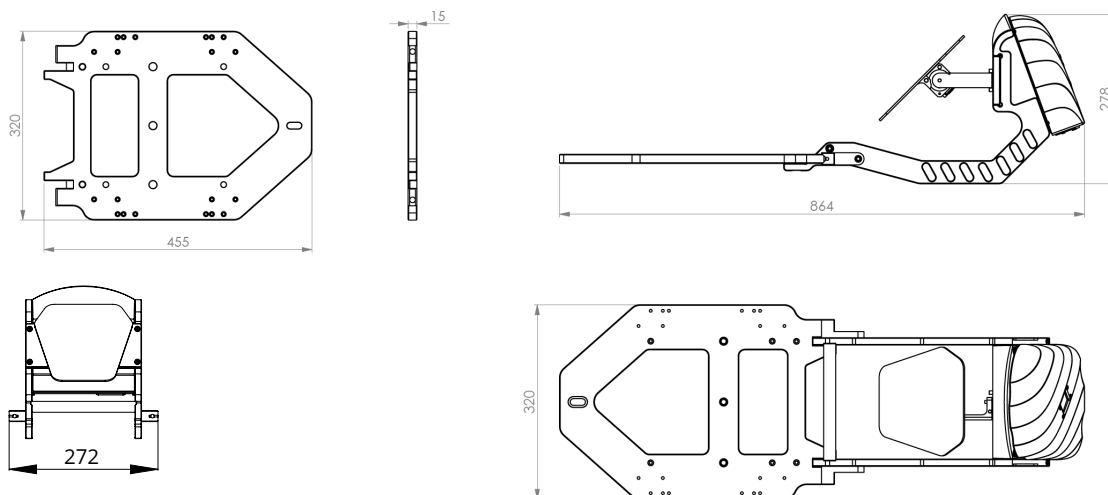
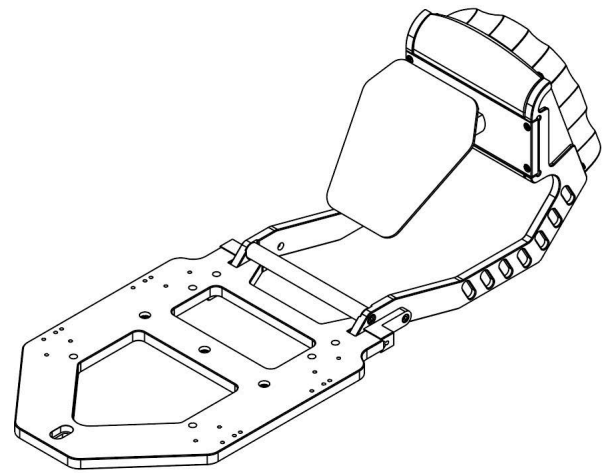


MIRROR HEAD SPECIFICATIONS / FEATURES

- High resolution 16bit Pan /Tilt mirror movement
- DMX-512 control over 14 DMX channels
- DMX-IN and DMX-OUT /Through port
(5-pin male and female XLR connectors)
- 14 DMX channels are required to control the unit
- Art-Net™ connection (RJ45) (Art-Net™ designed by
and Copyright Artistic License Holdings Ltd.)
- High resolution micro step motors with maintenance
free direct drive
- Self calibrating mirror position for high accuracy
- Absolute reposition accuracy smaller than 0.03°
- Movement accuracy: Pan and Tilt from the same direction to the
programmed point within approximately 0.01°
- RS232 remote control connection for projector (D-sub 9 male)
- cable included
- Flash-able firmware (Mini USB OTG)
- High resolution LED-Display for easy configuration
- LED-Display back-light auto turn off for energy saving
- LED-Display Flip / Flop mode for easy reading in difficult positions
- Coated mirror for optimum reflection ~98% refraction factor
- Optimized mirror optics for the specific projector
- Passive cooled system (excluding projector)
- Environmental tolerances: Ambient operating temperature
range: 5°–35°C, Humidity: 20%–80% (non-condensing)
- Quick, secure and easy snap-in mounting
- Anodized light metal construction



Control unit / MHE01



ITEM NUMBER: MH19

- Package dimensions (W / D / H): 585 x 380 x 380 mm
- Package weight: 9.2 kg
- Package includes: Quick Installation Guide MH19, Mirror Head unit,
RS232 cable, A/C power cable, Mounting screws and spacers,
Loctite screw lock, Metric Hex key 2mm and 5mm



To protect the environment,
please try to recycle the packing
material as much as possible.

