



#TheMH20 - Mirror Head 20 Christie Roadster J Series

#TheMH20 – A tool the industry has been waiting for. – You can now align and move projection positions and create fascinating shows with 3-chip DLP projectors by Christie Roadster J Series, like the HD20K-J.

Use your projectors to their full potential. – #TheMH20 is the pair of wings for your projector. Now you can easily move projection positions to reach more surfaces and project bright and colourful content across an entire room.

Optimized for professional show integrators. – You can easily mount a base plate to any Mirror Head 20 compatible projector. Once mounted, your projector is ready for #TheMH20.

Ideal for rental and touring. – #TheMH20 is equipped with a quick, easy and secure mounting done in less than a minute while you are on the road.

It is important to note. – #TheMH20 has been designed and is produced in Austria to ensure a high-level of performance. Dynamic Projection Institute has designed this powerful tool to operate at industry-levels of efficiency and we guarantee accurate projection positioning.

SPECIFICATIONS MIRROR HEAD 20 WITH CHRISTIE HD20K-J

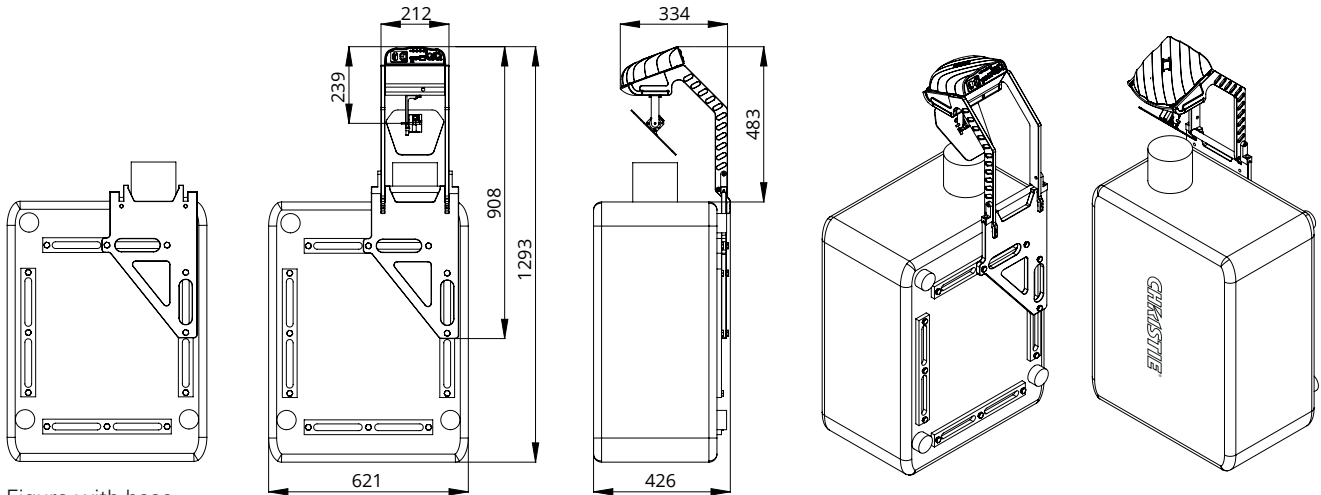


Figure with base
plate

MECHANICAL SPECIFICATIONS WITH HD20K-J

Fixture dimensions (W / D / H)	621 x 426 x 1293mm
Fixture total	91 kg
Projector HD20K-J + Lens HD 1.4-1.8/1	83 kg
Mirror Head 20	8 kg

PROJECTOR COMPATIBILITY

Christie Roadster 3DLP Digital Projector J Series
S+18K-J / S+22K-J
HD14K-J / HD16K-J / HD18K-J / HD20K-J
WU14K-J / WU20K-J

ELECTRICAL SPECIFICATIONS

INPUT POWER

100-240V / 2-1A / 50-60Hz,
Max. 10A (3-prong C14 male socket)

POWER CONSUMPTION

Max. 17W
Standby mode 3W

IMPORTANT NOTE: For information about the specifications, operations and use of the projector carefully read the instruction manual of your projector.
<https://www.christiedigital.com/en-us/business/products/projectors/3-chip-dlp/j-series>

CAUTION: For the use of closed-type riggings such as half-coupler clamps secure the fixture with a safety cable (or other secondary attachments) that is approved for the weight of the fixture, so that the safety cable will hold the fixture if the primary attachment fails.

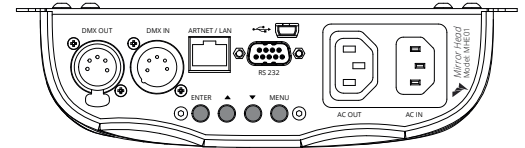
LENS COMPATIBILITY LIST / J Series

Art.Nr. 118-100 110-XX	... 111-XX	... 112-XX	... 113-XX	... 114-XX	... 115-XX	... 116-XX	... 117-XX
T.R.	Lens ILS 0.73 SX + 0.67 HD	Lens ILS 1.25 - 1.6 SX + 1.16 - 1.49 HD	Lens ILS 1.5 - 2.0 SX + 1.4 - 1.8 HD	Lens ILS 2.0 - 2.8 SX + 1.8 - 2.6 HD	Lens ILS 2.8 - 4.5 SX + 2.6 - 4.1 HD	Lens ILS 4.5 - 7.5 SX + 4.1 - 6.9 HD	Lens ILS 7.5 - 11.2 SX + 6.9 - 10.4 HD	Lens ILS 1.2 SX + 1.1 HD
MH20	-	-	X	X	X	X	X	-

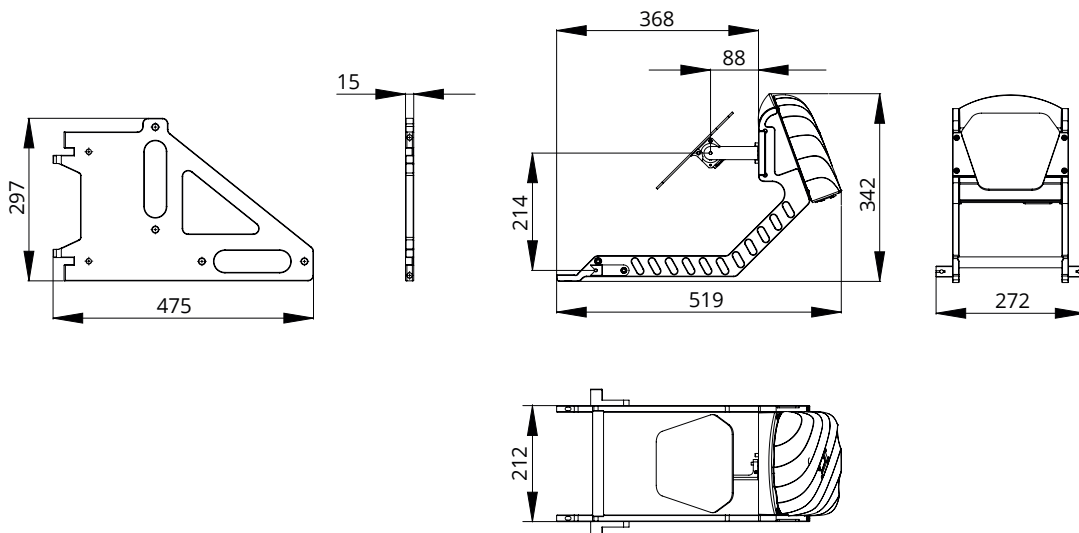
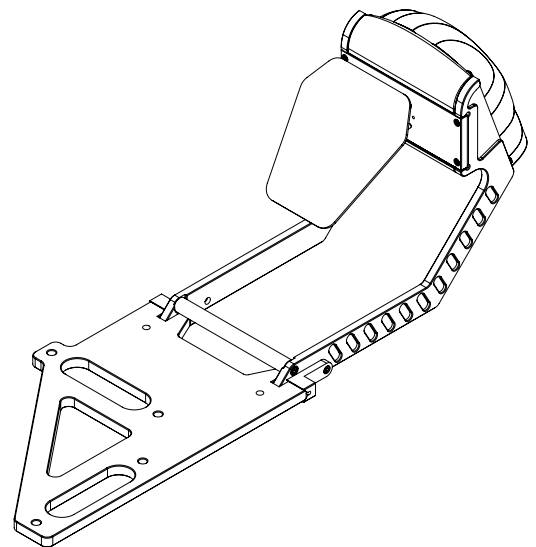
Due to optical reasons
we do not recommend
this lens below a throw
ratio of 1.6.

MIRROR HEAD SPECIFICATIONS / FEATURES

- High resolution 16bit Pan /Tilt mirror movement
- DMX-512 control over 14 DMX channels
- DMX-IN and DMX-OUT /Through port (5-pin male and female XLR connectors)
- 14 DMX channels are required to control the unit
- Art-Net™ connection (RJ45) (Art-Net™ designed by and Copyright Artistic License Holdings Ltd.)
- High resolution micro step motors with maintenance free direct drive
- Self calibrating mirror position for high accuracy
- Absolute reposition accuracy smaller than 0.03°
- Movement accuracy: Pan and Tilt from the same direction to the programmed point within approximately 0.01°
- RS232 remote control connection for projector (D-sub 9 male)
- cable included
- Flash-able firmware (Mini USB OTG)
- High resolution LED-Display for easy configuration
- LED-Display back-light auto turn off for energy saving
- LED-Display Flip / Flop mode for easy reading in difficult positions
- Coated mirror for optimum reflection ~98% refraction factor
- Optimized mirror optics for the specific projector
- Passive cooled system (excluding projector)
- Environmental tolerances: Ambient operating temperature range: 5°–35°C, Humidity: 20%–80% (non-condensing)
- Quick, secure and easy snap-in mounting
- Anodized light metal construction



Control unit / MHE01



ITEM NUMBER: MH20

- Package dimensions (W / D / H): 590 x 380 x 370 mm
- Package weight: 10,5 kg
- Package includes: Manual, Mirror Head unit, RS232 cable, A/C power cable, Mounting screws and spacers, Loctite screw lock, Metric Hex key 2 mm and 5 mm

