



#TheMH21 – Mirror Head 21

Christie Boxer Series

#TheMH21 – A tool the industry has been waiting for. – You can now align and move projection positions and create fascinating shows with 3-chip DLP projectors by Christie Boxer Series, like the Boxer 4K30, 2K30 and many more.

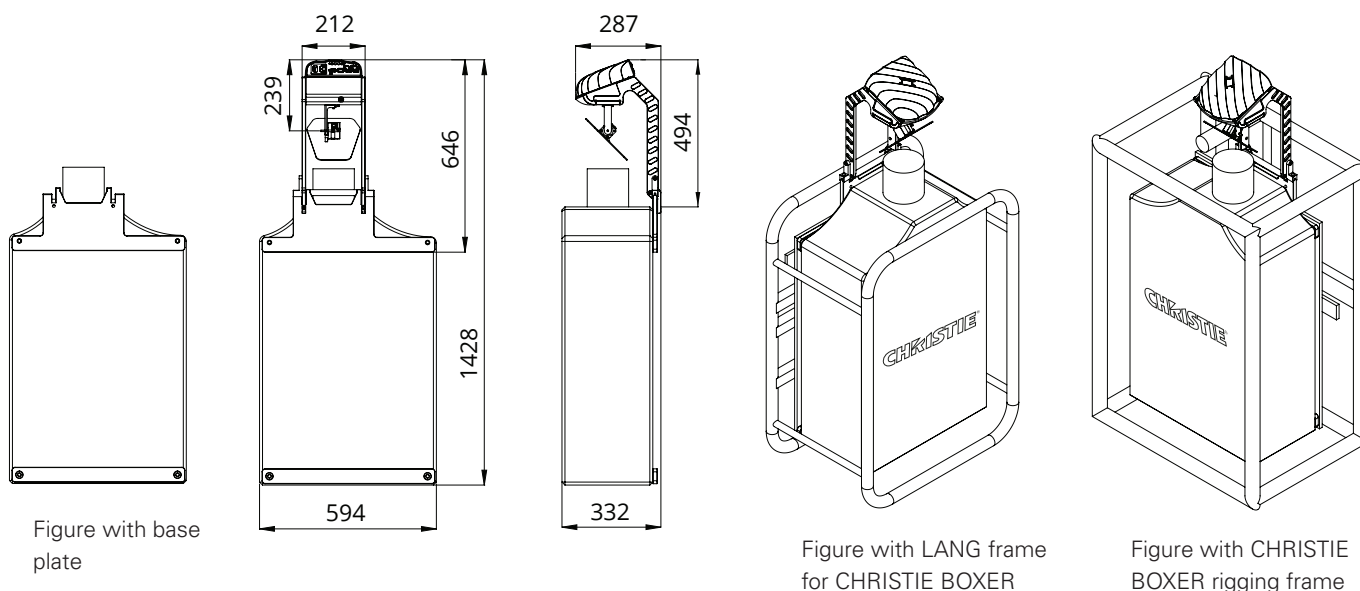
Use your projectors to their full potential. – #TheMH21 is the pair of wings for your projector. Now you can easily move projection positions to reach more surfaces and project bright and colourful content across an entire room.

Optimized for professional show integrators. – You can easily mount the base plate to any Mirror Head 21 compatible projector. Once mounted, your projector is ready for #TheMH21.

Ideal for rental and touring. – #TheMH21 is 100% stack frame compatible with a quick, easy and secure mounting done in less than a minute while you are on the road.

It is important to note. – #TheMH21 has been designed and is produced in Austria to ensure a high-level of performance. Dynamic Projection Institute has designed this powerful tool to operate at industry-levels of efficiency and we guarantee accurate projection positioning.

SPECIFICATIONS MIRROR HEAD 21 WITH CHRISTIE BOXER 4K30



MECHANICAL SPECIFICATIONS WITH Boxer 4K30

Fixture dimensions (W / D / H)	1428 x 594 x 332 mm
Fixture total	81.5 kg
Projector 4K30 (excl. lens)	73 kg
Mirror Head 21	8.5 kg

ELECTRICAL SPECIFICATIONS

INPUT POWER
100-240V / 2-1A / 50-60Hz,
Max. 10A (3-prong C14 male socket)
POWER CONSUMPTION
Max. 17W
Standby mode 3W

PROJECTOR COMPATIBILITY

Christie Boxer 3DLP projectors in 2K and 4K:

Boxer 2K20	2K (2048 x 1080) / 19,500 ANSI
Boxer 2K30	2K (2048 x 1080) / 29,000 ANSI
Boxer 4K20	4K (4096 x 2160) / 19,500 ANSI
Boxer 4K30	4K (4096 x 2160) / 29,000 ANSI

Caution! There are no user serviceable parts (fuse) inside this unit.

IMPORTANT NOTE: For information about the specifications, operations and use of the projector carefully read the instruction manual of your projector.
<https://www.christiedigital.com/emea/business/products/projectors/3-chip-dlp/boxer-series>

CAUTION: For the use of closed-type riggings such as half-coupler clamps secure the fixture with a safety cable (or other secondary attachments) that is approved for the weight of the fixture, so that the safety cable will hold the fixture if the primary attachment fails.

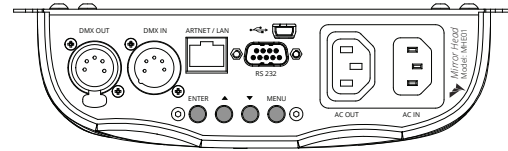
LENS COMPATIBILITY LIST / FOR CHRISTIE BOXER SERIES

Art.Nr. 144 - 105107-XX	... 106108-XX	... 107109-XX	... 108100-XX (++)	... 109101-XX (++)
T.R.	HB Zoom Lens 1.63 - 2.17:1	HB Zoom Lens 1.99 - 2.71:1	HB Zoom Lens 2.71 - 3.89:1	HB Zoom Lens 3.89 - 5.43:1	HB Zoom Lens 4.96 - 7.69:1

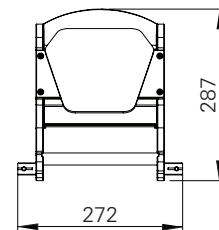
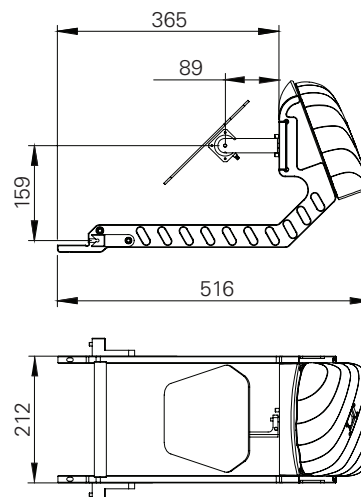
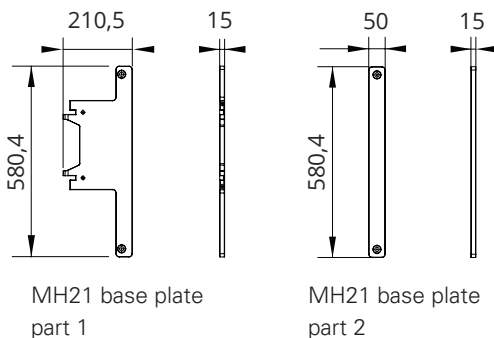
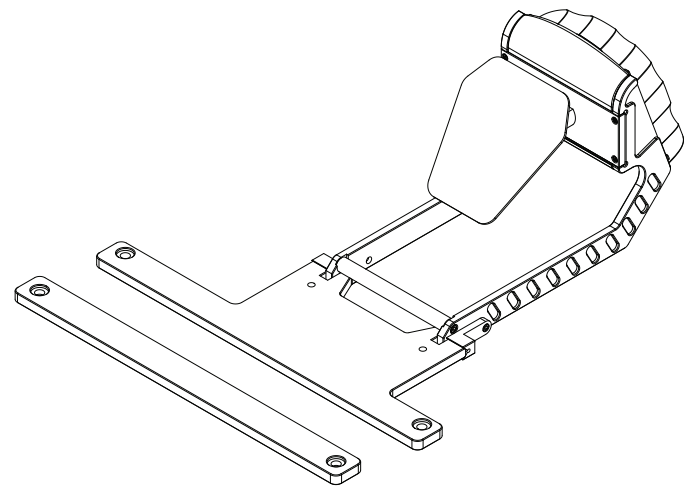
NOTE: Due to optical reasons we do not recommend this lens below a throw ratio of 1.6. (++) To be compatible use the Mirror Head Lens Extension MHZ-LE8

MIRROR HEAD SPECIFICATIONS / FEATURES

- High resolution 16bit Pan / Tilt mirror movement
- DMX-512 control over 14 DMX channels
- DMX-IN and DMX-OUT / Through port (5-pin male and female XLR connectors)
- 14 DMX channels are required to control the unit
- Art-Net™ connection (RJ45) (Art-Net™ designed by and Copyright Artistic License Holdings Ltd.)
- High resolution micro step motors with maintenance free direct drive
- Self calibrating mirror position for high accuracy
- Absolute reposition accuracy smaller than 0.03°
- Movement accuracy: Pan and Tilt from the same direction to the programmed point within approximately 0.01°
- RS232 remote control connection for projector (D-sub 9 male) - cable included
- Flash-able firmware (Mini USB OTG)
- High resolution LED-Display for easy configuration
- LED-Display back-light auto turn off for energy saving
- LED-Display Flip / Flop mode for easy reading in difficult positions
- Coated mirror for optimum reflection ~98% refraction factor
- Optimized mirror optics for the specific projector
- Passive cooled system (excluding projector)
- Environmental tolerances: Ambient operating temperature range: 5°–35°C, Humidity: 20%–80% (non-condensing)
- Quick, secure and easy snap-in mounting
- Anodized light metal construction



Control unit / MHE01



ITEM NUMBER: MH21

- Package dimensions (W / D / H): 650 x 375 x 370 mm
- Package weight: 11.5 kg
- Package includes: Manual, Mirror Head unit, RS232 cable, A/C power cable, Mounting screws and spacers, Loctite screw lock, Metric Hex key 2 mm and 5 mm



To protect the environment, please try to recycle the packing material as much as possible.

